

# City of Upland Local Hazard Mitigation Plan

City Council Update

March 23, 2026

Damien R. Arrula, Assistant City Manager

Tanya Garcia, Management Analyst

Aaron Pfannenstiel, Atlas Planning Solutions



# Background

LHMPs require update every 5 years in accordance with the Disaster Mitigation Action of 2000



Upland's last plan was updated in 2016



Upland received a grant in 2024 to prepare this update.

- This grant is paying for our consultant

# Meet Atlas Planning Solutions



Aaron Pfannenstiel  
CFO | Principal | Program  
Manager



Small Women Owned Business  
Headquartered in Riverside, CA



Specializes in Hazard Mitigation Plans (HMPs), Emergency  
Operations Plans (EOPs), and other preparedness documents



Extensive Inland Empire  
Experience

Rancho Cucamonga  
Ontario  
San Bernardino

Colton  
Loma Linda

# Draft Local Hazard Mitigation Plan



# KEY PROJECT ELEMENTS



## WHAT

- Update of The Local Hazard Mitigation Plan (LHMP)



## WHO

- Emergency Management / Public Works



## WHY

- Future Mitigation Grant Opportunities

# WHO IS THIS PLAN FOR?

## Upland Emergency Management

- Pursue Grants
- Reduce future hazard risks
- Make their jobs easier in the future

## Upland City Departments

- Increase funding for project and programs
- Fix problems before they turn into disasters

## Decision Makers

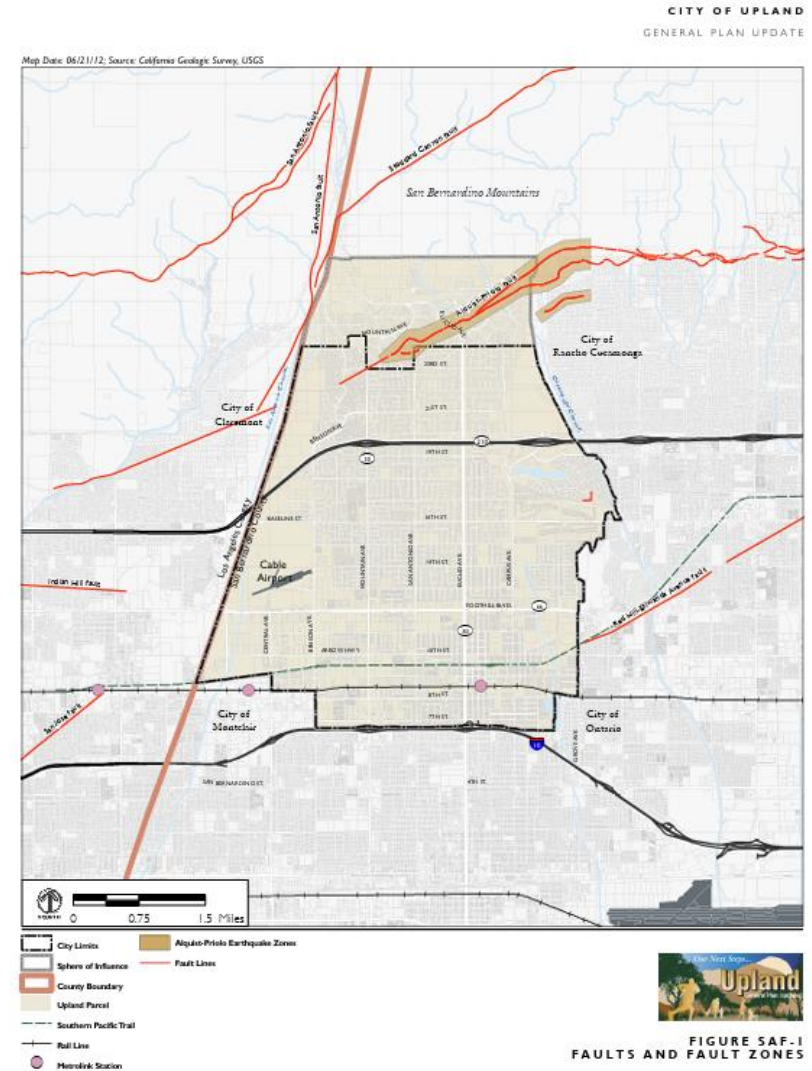
- Reduce hazard risks that may affect residents, businesses, and City operations.
- Leverage federal grant funding

## Residents, Businesses, and Stakeholders

- Improve quality of life
- Create opportunities to partner with businesses, non-profits, and other agencies

# FITTING THE PIECES TOGETHER

Works with the Safety Element



# WHAT IS HAZARD MITIGATION?



Sustained actions taken to reduce or eliminate long-term risk to life and property from hazards



Actions that make the community less vulnerable to natural hazards before disasters strike

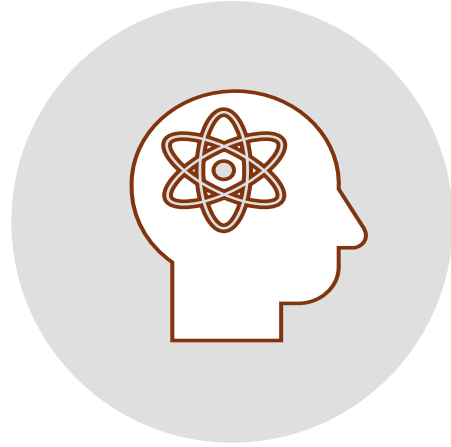


Communities reduce their vulnerability through the development of a Local Hazard Mitigation Plan (LHMP)

# WHAT DOES AN LHMP DO?



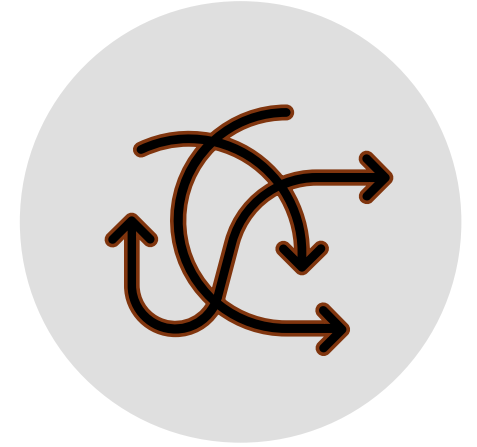
Discuss Community hazards



Analyzes hazard risks



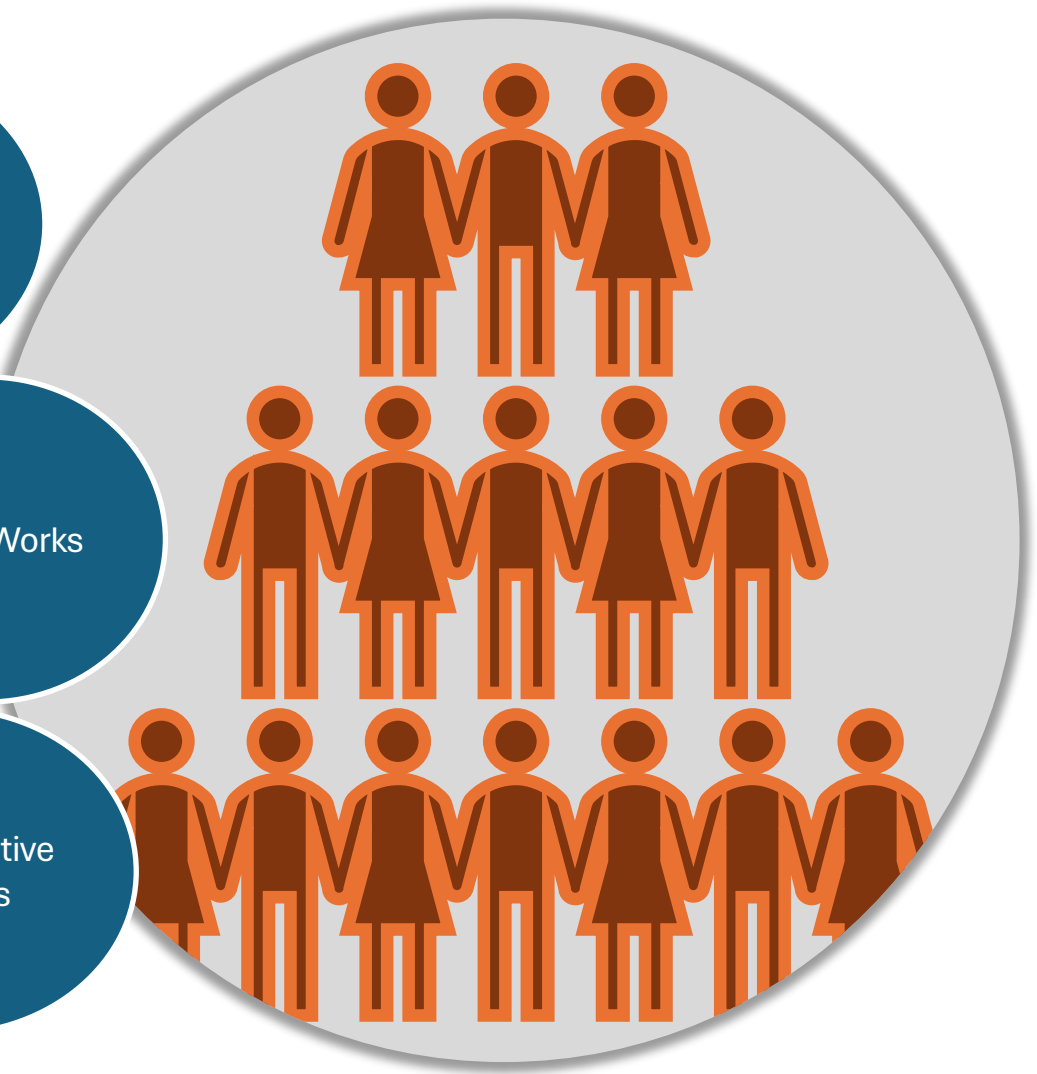
Identifies Policies / Projects  
to Reduce Risk



Provides direction to  
implement and monitor



**WHO IS PARTICIPATING IN THE LHMP PLANNING PROCESS?**



# WHY PREPARE AN LHMP?

Reduces injury, loss of life, property damage, and loss of services from natural disasters.

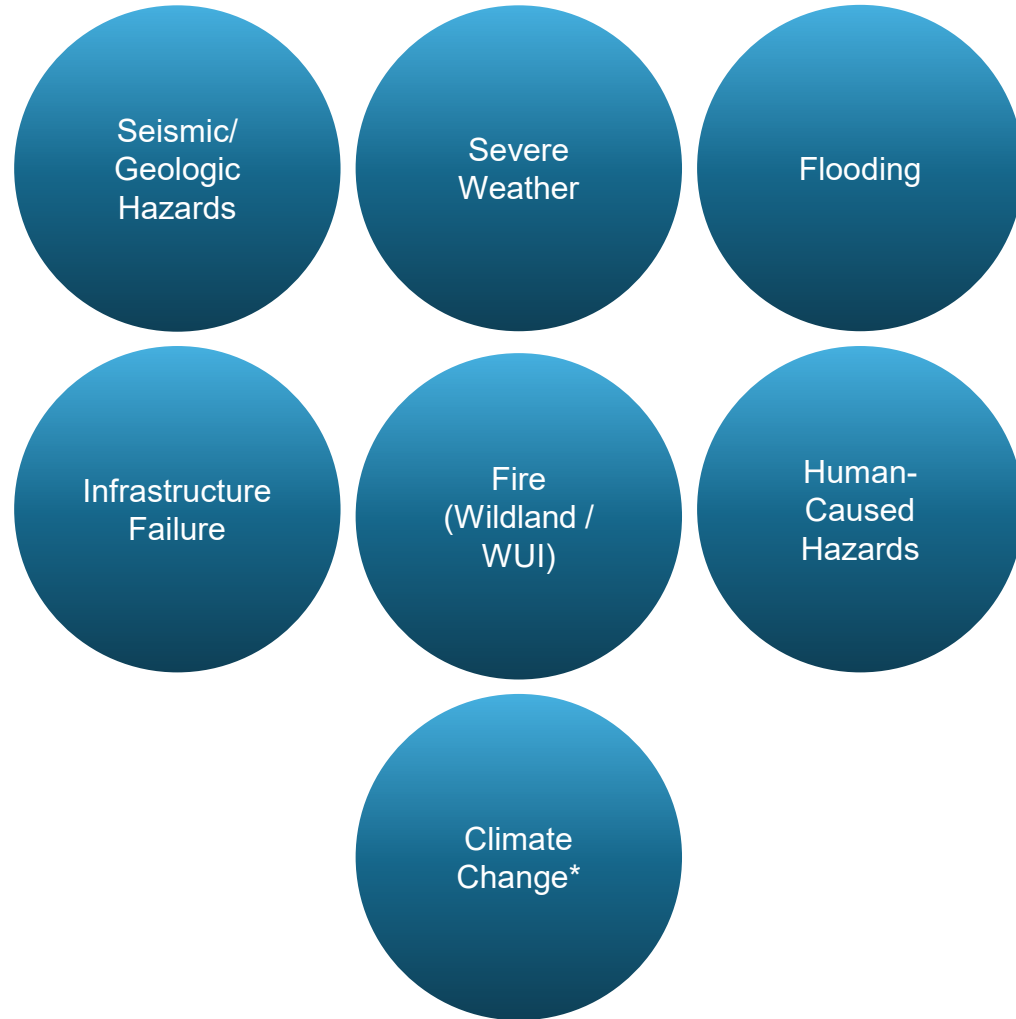
## Eligibility for FEMA Grants:

- Building Resilient Infrastructure and Communities (BRIC) replaces PDM
- Flood Mitigation Assistance (FMA)
- Hazard Mitigation Grant Program (HMGP)

Eligible Activities	HMGP	PDM	FMA
	HAZARD MITIGATION GRANT PROGRAM	PRE-DISASTER MITIGATION	FLOOD MITIGATION ASSISTANCE
<b>1. Mitigation Projects</b>	✓	✓	✓
Safe Room Construction	✓	✓	✗
Infrastructure Retrofit	✓	✓	✓
Soil Stabilization	✓	✓	✓
Wildfire Mitigation	✓	✓	✗
Post-Disaster Code Enforcement	✓	✗	✗
5% Initiative Projects	✓	✗	✗
<b>2. Hazard Mitigation Planning</b>	✓	✓	✓
<b>3. Management Costs</b>	✓	✓	✓

Eligible Activities	HMGP	PDM	FMA
	HAZARD MITIGATION GRANT PROGRAM	PRE-DISASTER MITIGATION	FLOOD MITIGATION ASSISTANCE
<b>1. Mitigation Projects</b>	✓	✓	✓
Property Acquisition & Structure Demolition	✓	✓	✓
Property Acquisition & Structure Relocation	✓	✓	✓
Structure Elevation	✓	✓	✓
Mitigation Reconstruction	✓	✓	✓
Dry Floodproofing of Historic Residential Structures	✓	✓	✓
Dry Floodproofing of Non-Residential Structures	✓	✓	✓
Minor Localized Flood Reduction Projects	✓	✓	✓
Structural Retrofitting of Existing Buildings	✓	✓	✓
Non-Structural Retrofitting of Existing Bld. & Facilities	✓	✓	✓

# WHAT HAZARDS ARE IN THE LHMP?

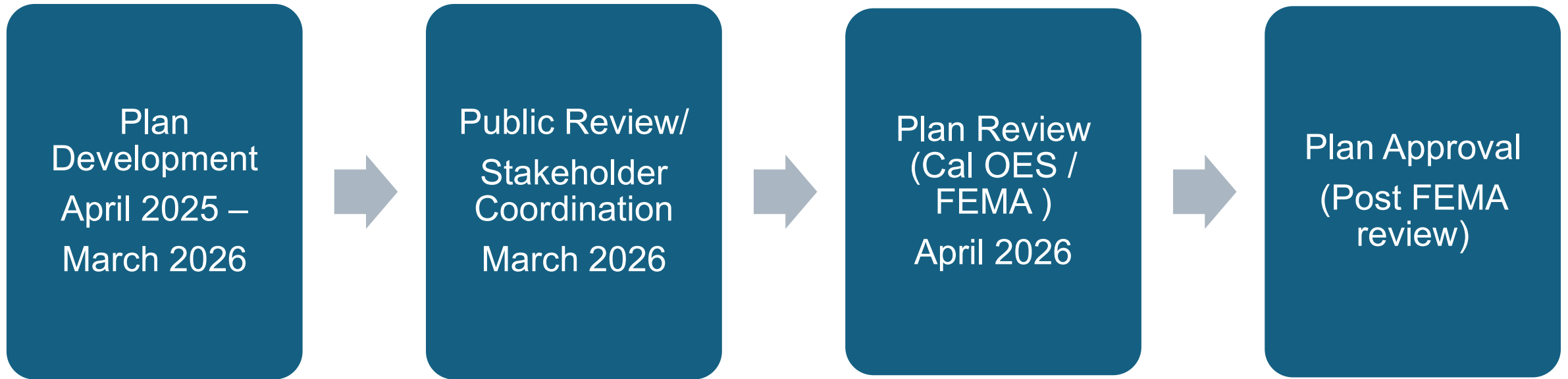


\* Addressed under each relevant hazard

**Table 3-4: Upland Hazard Prioritization Scores and Threat Levels**

Hazard	Probability (2.0)	Impact (2.0)			Total Score	Hazard Planning Consideration
		Location (0.8)	Primary Impact (0.7)	Secondary Impact (0.5)		
<b>Seismic Hazards</b>	3	3	3	3	36	<b>Medium</b>
• Fault Rupture	3	2	3	2	28.2	Medium
• Seismic Shaking	3	4	3	4	43.8	High
<b>Fire</b>	3	3	3	4	39	<b>Medium</b>
• Wildland Fire / Wildland Urban Interface Fire	3	3	3	4	39	Medium
<b>Human-caused Hazards</b>	2.8	1.8	2.6	2.6	25.1	<b>Medium</b>
• Hazardous Materials Release	3	2	2	3	27	Medium
• Landfill Subsidence	3	1	2	2	19.2	Medium
• Transportation Incidents (Rail, Aircraft, Highway)	2	2	3	3	20.8	Medium
• Cybercrime Incidents	4	2	3	2	37.6	Medium
• Mass Casualty / Fatality Incidents	2	2	3	3	20.8	Medium
<b>Severe Weather</b>	2.7	3	2	2.7	28	<b>Medium</b>
• Extreme Heat	2	3	2	3	21.2	Medium
• Drought	2	2	2	3	18	Medium
• Severe Wind	4	4	2	2	44.8	High
<b>Infrastructure Failure</b>	2.5	4	2.2	3	28.6	<b>Medium</b>
• Power Failure	2	4	2	3	24.4	Medium
• Public Safety Power Shutoff	3	4	2	3	32.7	Medium
<b>Flood</b>	2	3	2.5	3	20.3	<b>Medium</b>
• Surface Flooding	3	2	2	3	27	Medium
• Dam and Levee Failure	1	4	3	3	13.6	Medium

# LHMP DEVELOPMENT PROCESS



# OUTREACH AND PUBLIC PARTICIPATION

Our Approach included both:

## Online Engagement

### Online Survey

32 Responses to Date (it is still open)

- Top three hazards: (1) Earthquakes, (2) High Winds, and (3) Wildfire.
- ~ 53% concerned that climate change may exacerbate or create new hazards, ~9% aren't concerned at all.
- ~ 57% of responders are familiar with the special needs of neighbors in the event of a disaster.

### LHMP Webpage

<https://www.uplandca.gov/local-hazard-mitigation-plan-lhmp>

## In Person Engagement

Stakeholder Meeting – March to April 2026

Public Review Period – March 2026

City Council Presentation – March 2026

Cal OES/ FEMA Review – April 2026

City Council Adoption – Post FEMA Approval

# QUESTIONS?

Please Contact:

**Tanya Garcia**

Management Analyst

[tgarcia@uplandca.gov](mailto:tgarcia@uplandca.gov)

