

PLANT PALETTE:

TREES & VINES

- | | | | |
|--|-----------------------------|--|--|
| | PRIMARY THEME TREE | | |
| | MULTI-TRUNK SPECIMEN TREE | | |
| | EVERGREEN BACKGROUND TREE | | |
| | FLOWERING ENTRY TREE | | |
| | INTERIOR STREET TREES | | |
| | SMALL FLOWERING ACCENT TREE | | |
| | D.G. TRAIL TREES | | |
| | VINES | | |
- | | | | |
|--|------------------------------|---|------------------------------------|
| | <i>Quercus agrifolia</i> | • | Coast Live Oak - Native |
| | <i>Platanus racemosa</i> | • | California Sycamore - Native |
| | <i>Pinus eldarica</i> | • | African Pine - Non-Native |
| | <i>Tabebuia chrysotricha</i> | • | Yellow Trumpet Tree Non-Native |
| | <i>Quercus ilex</i> | • | Holly Oak - Non-Native |
| | <i>Cercis occidentalis</i> | • | Western Redbud - Native |
| | <i>Platanus racemosa</i> | • | California Sycamore - Native |
| | <i>Quercus agrifolia</i> | • | Coast Live Oak - Native |
| | <i>Fraxinus o. 'Raywood'</i> | • | Raywood Ash - Non-Native |
| | <i>Ficus pumila</i> | • | Creeping Fig - Non-Native |
| | <i>Rosa banksiae 'Lutea'</i> | • | Yellow Landbanks Rose - Non-Native |

PROPOSED MAIN GATE ENTRY

BACKGROUND

- | | | |
|----------------------------|---|---------------------------------|
| RHAMNUS C. 'EVE CASE' | • | EVE CASE COFFEEBERRY - NATIVE |
| CARPENTERIA C. 'ELIZABETH' | • | ELIZABETH BUSH ANEMONE - NATIVE |
| PODOCARPUS MACROPHYLLUS | • | YEW PINE - NON-NATIVE |
| TAGETES LEMONII | • | MEXICAN MARIGOLD - NON-NATIVE |
| SALVIA CLEVELANDII | • | CLEVELAND SAGE - NATIVE |
| SAMBUCUS NIGRA | • | BLACK ELDERBERRY - NATIVE |
| HETEROMELES ARBUTIFOLIA | • | TOYON - NATIVE |
| PRUNUS ILICIFOLIA | • | CATALINA CHERRY - NATIVE |
- | | | |
|---------------------------|---|---------------------------------|
| MUHLBERGIA RIGENS | • | DEER GRASS - NATIVE |
| ERIOGONUM FASCICULATUM | • | CALIFORNIA BUCKWHEAT - NATIVE |
| LEYMUS C. 'CANYON PRINCE' | • | CANYON PRINCE WILD RYE - NATIVE |
| ROSMARINUS SPECIES | • | ROSEMARY - NON-NATIVE |
| SALVIA SPECIES | • | SAGE - NATIVE |
| MUHLBERGIA DUBIA | • | PINE MUHLY - NON-NATIVE |
| MUHLBERGIA CAPILLARIS | • | PINK MUHLY - NON-NATIVE |
| EPILOBIUM 'ROUTE 66' | • | CALIFORNIA FUSCHIA - NATIVE |
| MIMULUS AURANTIACUS | • | STICKY MONKEY FLOWER - NATIVE |
| BACCHARIS X 'STARN' | • | STARN COYOTE BRUSH - HYBRID |
| RUSSELLIA Equisetiformis | • | FIRECRACKER PLANT - NON-NATIVE |
| RIBES SPECIOSUM | • | FUSCHIA GOOSEBERRY - NATIVE |

MIDGROUND

- | | | |
|---------------------------|---|---------------------------------|
| MUHLBERGIA RIGENS | • | DEER GRASS - NATIVE |
| ERIOGONUM FASCICULATUM | • | CALIFORNIA BUCKWHEAT - NATIVE |
| LEYMUS C. 'CANYON PRINCE' | • | CANYON PRINCE WILD RYE - NATIVE |
| ROSMARINUS SPECIES | • | ROSEMARY - NON-NATIVE |
| SALVIA SPECIES | • | SAGE - NATIVE |
| MUHLBERGIA DUBIA | • | PINE MUHLY - NON-NATIVE |
| MUHLBERGIA CAPILLARIS | • | PINK MUHLY - NON-NATIVE |
| EPILOBIUM 'ROUTE 66' | • | CALIFORNIA FUSCHIA - NATIVE |
| MIMULUS AURANTIACUS | • | STICKY MONKEY FLOWER - NATIVE |
| BACCHARIS X 'STARN' | • | STARN COYOTE BRUSH - HYBRID |
| RUSSELLIA Equisetiformis | • | FIRECRACKER PLANT - NON-NATIVE |
| RIBES SPECIOSUM | • | FUSCHIA GOOSEBERRY - NATIVE |

MIDGROUND CONTINUED

- | | | |
|--------------------------|---|-------------------------------|
| CISTUS X P. 'SUNSET' | • | MAGENTA ROCKROSE - NON-NATIVE |
| HESPERALOE PARVIFLORA | • | RED YUCCA - NON-NATIVE |
| ROSA SPECIES | • | ROSE - NON-NATIVE |
| ARTEMISIA 'POWIS CASTLE' | • | WORMWOOD - NON-NATIVE |

FOREGROUND

- | | | |
|--------------------------------|---|-------------------------------------|
| LAVANDULA SPECIES | • | LAVENDER - NON-NATIVE |
| BACCHARIS P. 'PIGEON POINT' | • | PIGEON POINT COYOTE BRUSH - NATIVE |
| ACHILLEA MILLEFOLIUM | • | COMMON YARROW - NATIVE |
| ACHILLEA X 'MOONSHINE' | • | MOONSHINE YARROW - HYBRID |
| BOUTELOUA G. 'BLONDE AMBITION' | • | BLONDE AMBITION BLUE GRAMA - NATIVE |
| CISTUS X P. 'SUNSET' | • | MAGENTA ROCKROSE - NON-NATIVE |
| FESTUCA I. 'SISKIYOU BLUE' | • | SISKIYOU BLUE FESCUE - NON-NATIVE |
| ROSMARINUS O. 'PROSTRATUS' | • | CREeping ROSEMARY - NON-NATIVE |
| ERIOGONUM F. 'WARRINER LYTLE' | • | W. L. CALIFORNIA BUCKWHEAT - NATIVE |
| CAREX PRAEGRACILIS | • | CA FIELD SEDGE - NATIVE |
| JUNCUS P. 'ELK BLUE' | • | ELK BLUE CA GRAY RUSH - NATIVE |
| DIANELLA SPECIES | • | FLAX LILY - NON-NATIVE |

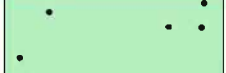
PARKWAY SHRUBS AND GROUNDCOVER

- | | | |
|--------------------------------|---|-------------------------------------|
| ACHILLEA X 'MOONSHINE' | • | MOONSHINE YARROW - HYBRID |
| BOUTELOUA G. 'BLONDE AMBITION' | • | BLONDE AMBITION BLUE GRAMA - NATIVE |
| CISTUS X P. 'SUNSET' | • | MAGENTA ROCKROSE - NON-NATIVE |
| FESTUCA I. 'SISKIYOU BLUE' | • | SISKIYOU BLUE FESCUE - NON-NATIVE |
| ROSMARINUS O. 'PROSTRATUS' | • | CREeping ROSEMARY - NON-NATIVE |

ENTRY SHRUBS AND GROUNDCOVER

- | | | |
|----------------------------|---|-----------------------------------|
| ACHILLEA X 'MOONSHINE' | • | MOONSHINE YARROW - HYBRID |
| RHAMNUS C. 'EVE CASE' | • | EVE CASE COFFEEBERRY - NATIVE |
| HESPERALOE PARVIFLORA | • | RED YUCCA - NON-NATIVE |
| ROSA SPECIES | • | ROSE - NON-NATIVE |
| SALVIA SPECIES | • | SAGE - NATIVE |
| CISTUS X P. 'SUNSET' | • | MAGENTA ROCKROSE - NON-NATIVE |
| FESTUCA I. 'SISKIYOU BLUE' | • | SISKIYOU BLUE FESCUE - NON-NATIVE |
| ROSMARINUS O. 'PROSTRATUS' | • | CREeping ROSEMARY - NON-NATIVE |
| MUHLBERGIA RIGENS | • | DEER GRASS - NATIVE |

TURF GRASS - NON-NATIVE



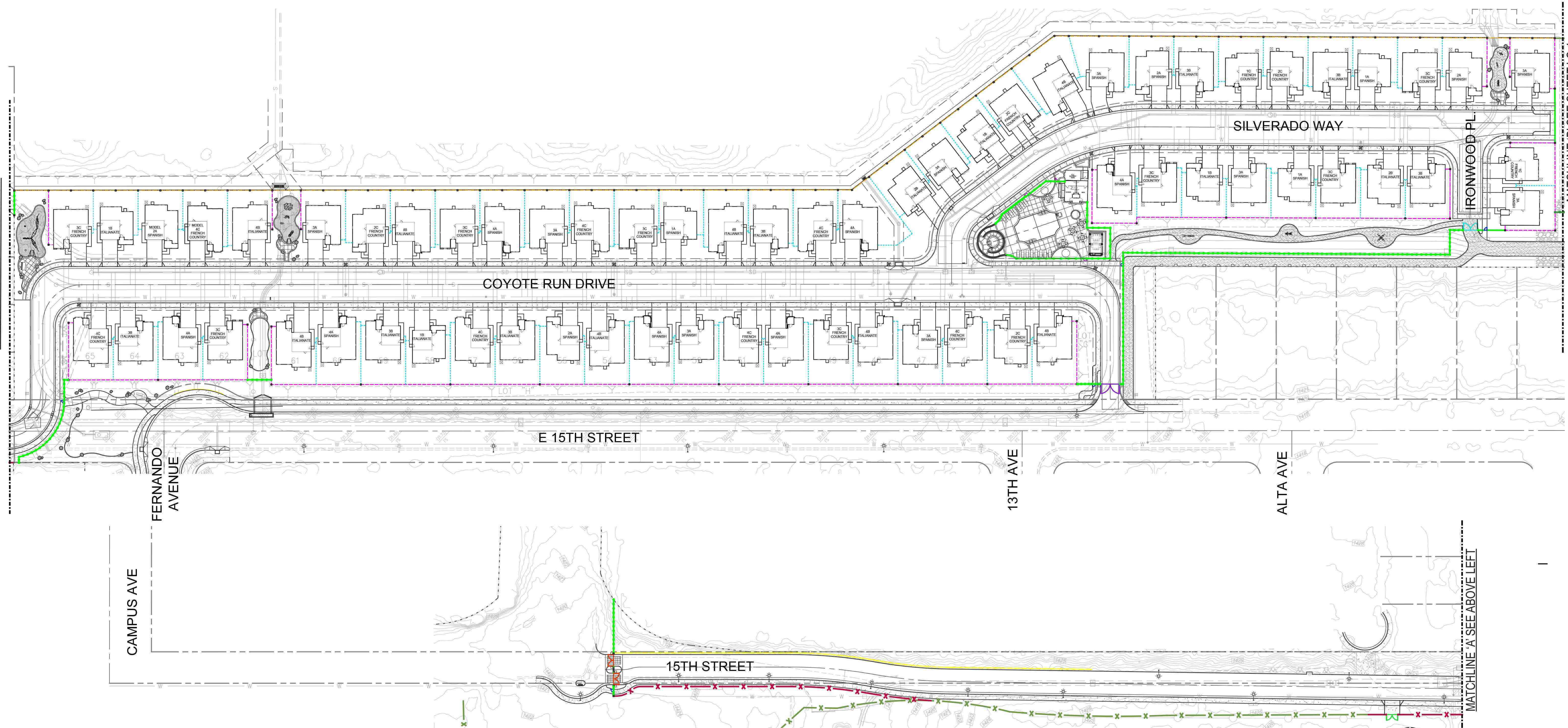
07/20/21



KB HOMES
VILLA SERENA GATED COMMUNITY
CONCEPTUAL LANDSCAPE MASTER PLAN 1
TM 20245, CITY OF UPLAND, CALIFORNIA

MATCHLINE 'A' SEE BELOW RIGHT

MATCHLINE 'B' SEE SHEET LC-4



CONCEPTUAL WALL LEGEND:

- 6'-0" HIGH TAN SPLIT FACE CMU BLOCK WALL WITH 4" PRECISION CAP AND 6'-8" HIGH PILASTER. SEE **DETAIL A, SHEET LC-5.**
- 6'-3" HIGH COMBO WALL WITH TAN SPLIT FACE AT 2'-0" HIGH AND BLACK TUBULAR STEEL VIEW FENCE AT 4'-3" AND INTERMITTENT 6'-8" PILASTERS. SEE **DETAIL B, SHEET LC-5.**
- 6'-0" BLACK TUBULAR STEEL VIEW FENCE. SEE **DETAIL C, SHEET LC-5.**
- 5'-0" HIGH TAN VINYL PRIVACY FENCE. SEE **DETAIL D, SHEET LC-5.**
- 3'-0" WIDE TAN VINYL SIDE YARD GATE. SEE **DETAIL E, SHEET LC-5.**
- TUBULAR STEEL VEHICULAR PRIMARY ENTRY GATE WITH TYPICAL TUBULAR STEEL PERIMETER FENCE & PILASTER. SEE **DETAIL H, SHEET LC-5.**
- EXISTING CHAIN LINK FENCE, PROTECT IN PLACE.
- NEW CHAIN LINK FENCE TO MATCH EXISTING CITY / RV STORAGE FENCE.
- EXISTING BLOCK PROPERTY WALL, PROTECT IN PLACE.
- RETAINING WALL PER CIVIL ENGINEER'S PLANS, TO BE SPLIT FACE CMU BLOCK ON VISIBLE SIDE.
- 6'-0" HIGH BASIN PERIMETER FENCING. SEE **DETAIL F, SHEET LC-5.**
- 20'-0" WIDE TUBULAR STEEL EMERGENCY ENTRANCE ONLY GATE AND NORMAL USE EXIT ONLY GATE.
- 12'-0" WIDE x 6' HIGH RV STORAGE GREEN VINYL COATED CHAIN LINK VEHICULAR GATE. SEE **DETAIL G, SHEET LC-5.**
- TUBULAR STEEL MAINTENANCE ONLY GATE.
- POOL GATE WITH PANIC HARDWARE.

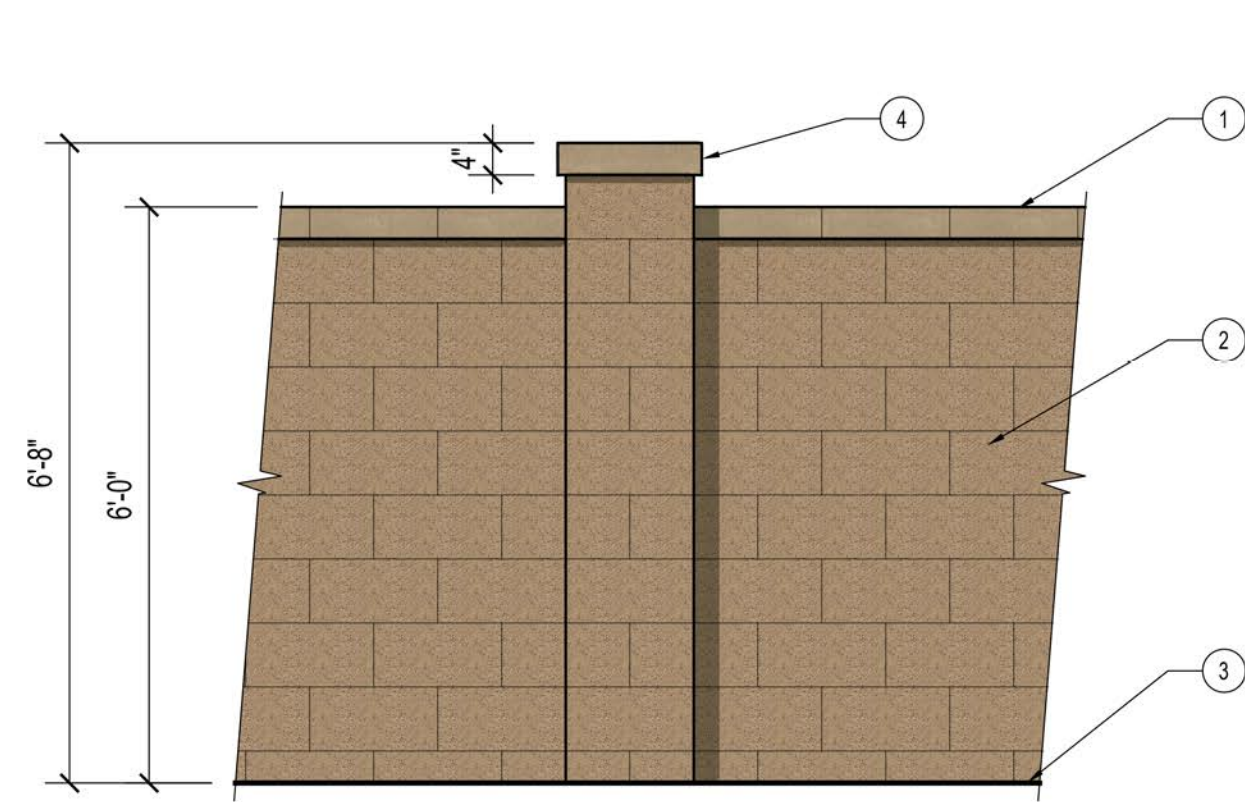
10/27/21



KB HOMES
VILLA SERENA GATED COMMUNITY
CONCEPTUAL WALL AND FENCE PLAN 1
TM 20245, CITY OF UPLAND, CALIFORNIA

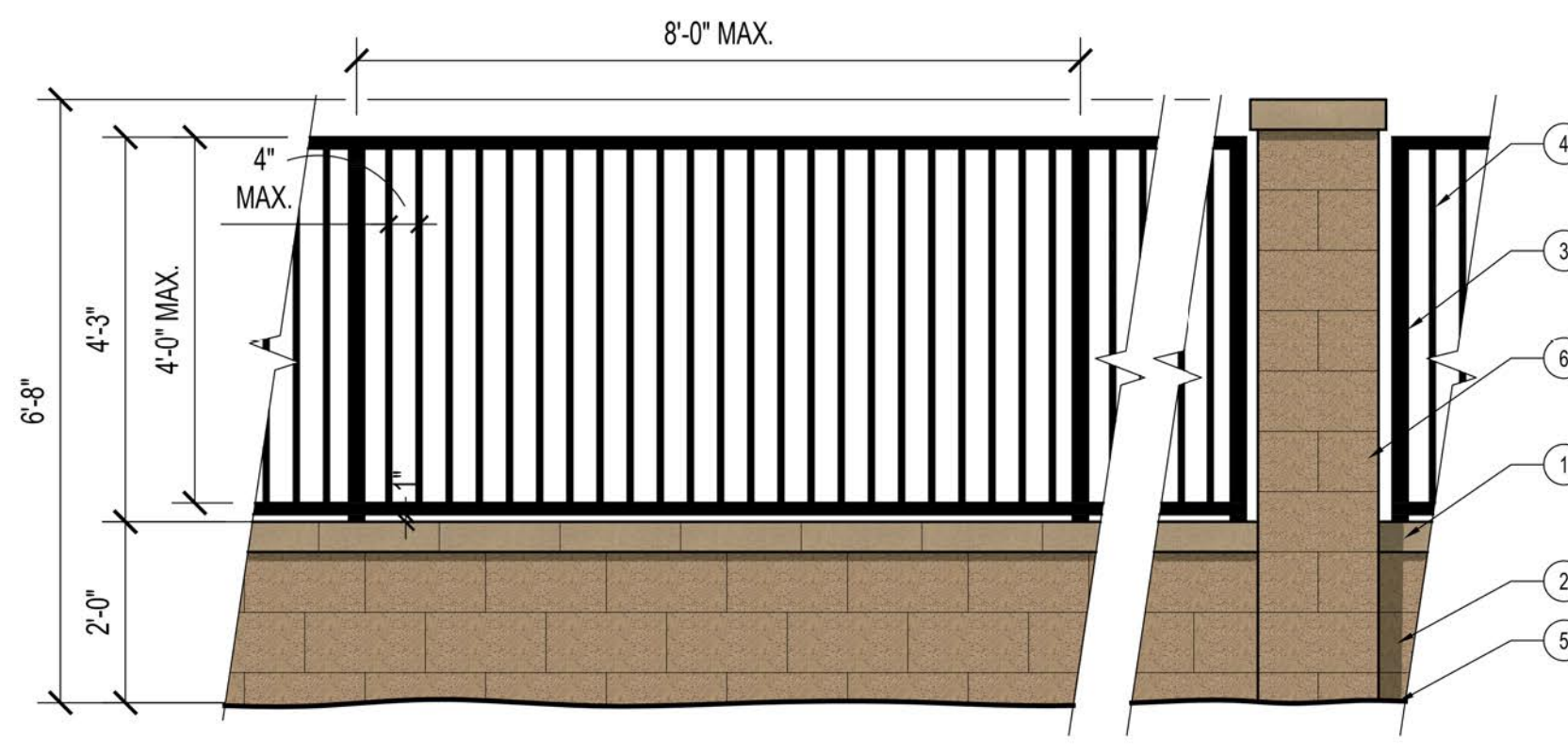


LC-3



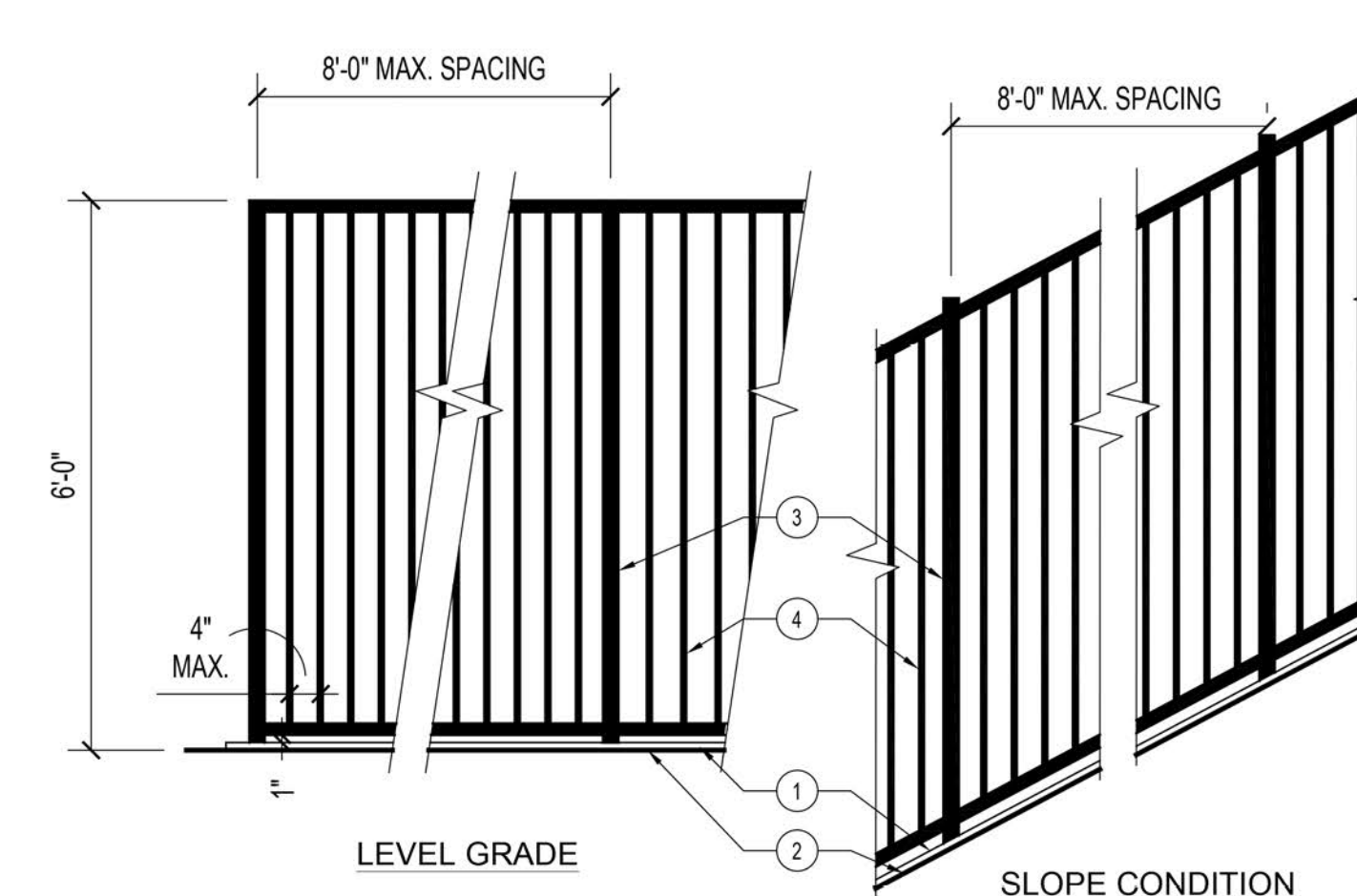
- LEGEND:**
- 6" x 4" x 16" PRECISION CAP, 'TAN' COLOR.
 - 6" x 8" x 16" SINGLE SIDED SPLIT FACE BLOCK CMU, 'TAN' COLOR.
 - FINISH GRADE.
 - 6'-8" TALL 'TAN' COLOR 6" x 8" x 16" SPLIT FACE CMU BLOCK PILASTER WITH 6" x 4" x 16" 'TAN' PRECISION CAP AT CORNERS AND SPACED EVERY OTHER LOT AT PROPERTY LINE.

A 6'-0" SINGLE SIDE SPLIT FACE WALL
SCALE: NOT TO SCALE



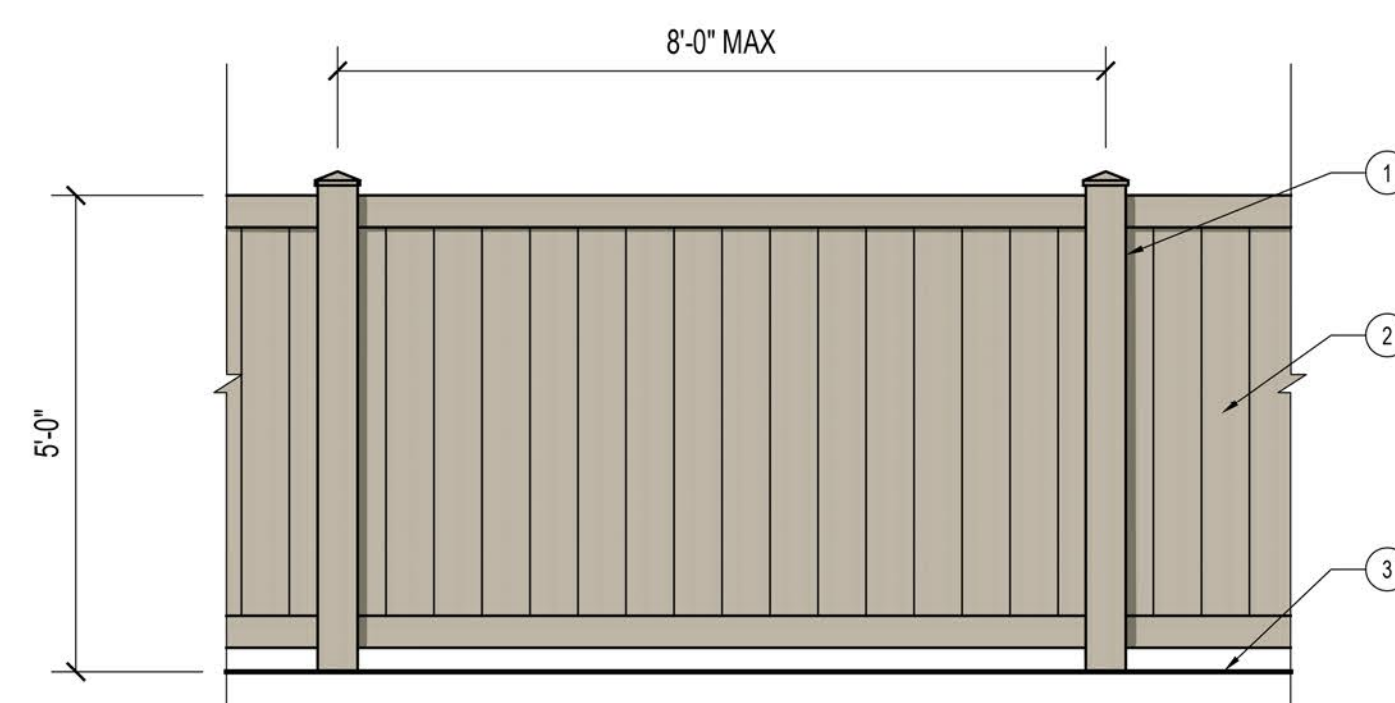
- LEGEND:**
- 6" x 4" x 16" PRECISION CAP, 'TAN' COLOR.
 - 6" x 8" x 16" SINGLE SIDED SPLIT FACE BLOCK CMU, 'TAN' COLOR.
 - TUBULAR STEEL FENCE CAPPED POSTS, PAINTED BLACK.
 - TUBULAR STEEL FENCE PICKETS, PAINTED BLACK.
 - FINISH GRADE.
 - 6'-8" TALL 'TAN' COLOR 6" x 8" x 16" SPLIT FACE CMU BLOCK PILASTER WITH 6" x 4" x 16" 'TAN' PRECISION CAP SPACED EVERY LOT AT PROPERTY LINE.

B COMBINATION BLOCK & VIEW FENCE
SCALE: NOT TO SCALE



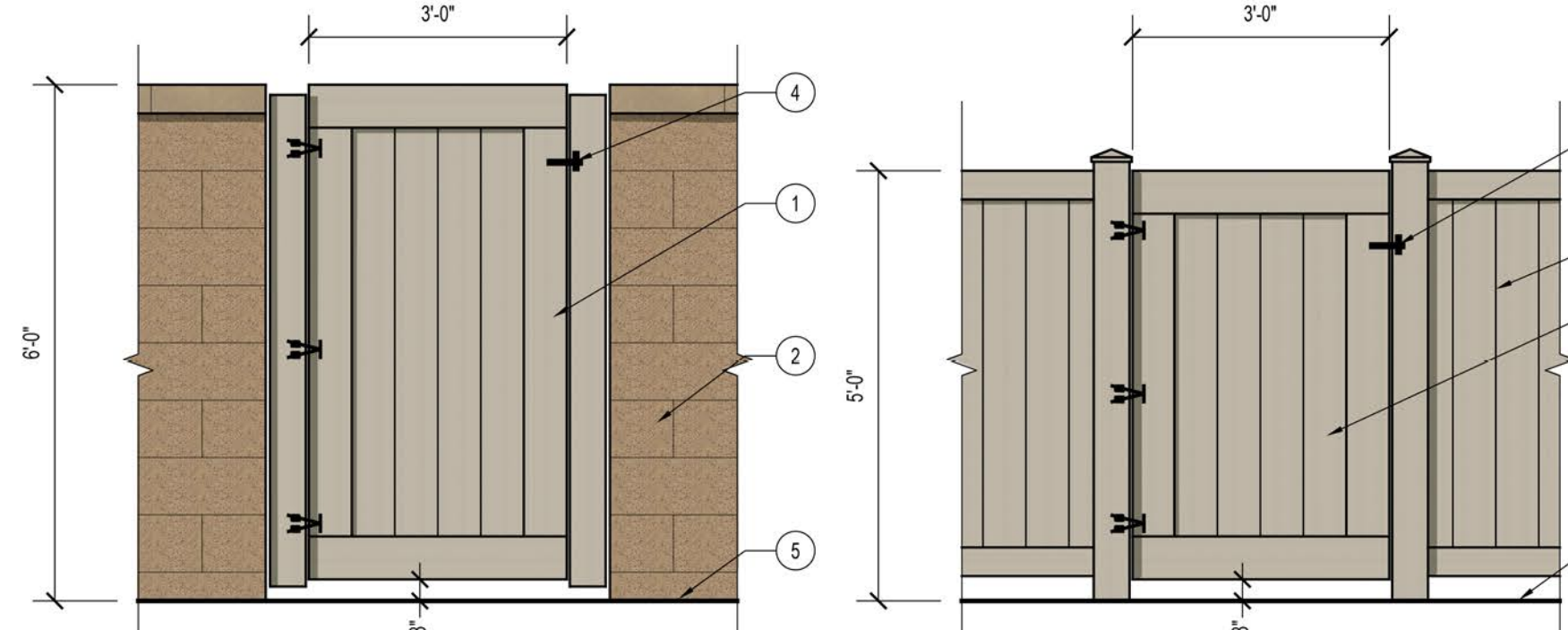
- LEGEND:**
- 8" WIDE CONCRETE HEADER.
 - FINISH GRADE.
 - TUBULAR STEEL FENCE CAPPED POSTS, PAINTED BLACK.
 - TUBULAR STEEL FENCE PICKETS, PAINTED BLACK.

C TUBULAR STEEL FENCE
SCALE: NOT TO SCALE



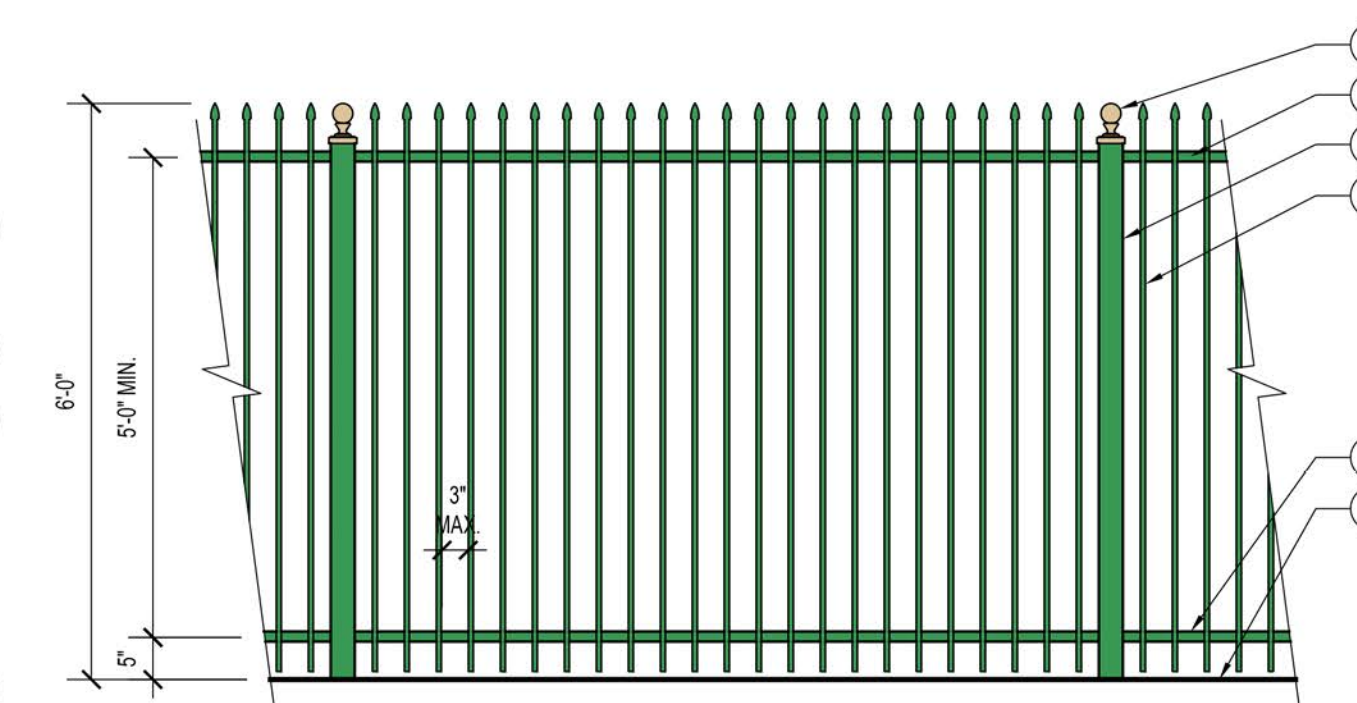
- LEGEND:**
- 5" SQ. VINYL FENCE POST WITH PYRAMID CAP, 'TAN' COLOR.
 - 6'-0" HIGH VINYL FENCE, 'TAN' COLOR.
 - FINISH GRADE.

D 5'-0" HIGH VINYL FENCE
SCALE: NOT TO SCALE



- LEGEND:**
- 3'-0" WIDE VINYL SIDE YARD GATE 'TAN' COLOR TO MATCH VINYL PRIVACY FENCE.
 - ADJACENT 6'-0" SPLIT FACE CMU BLOCK WALL w/ PRECISION CAP.
 - ADJACENT 5'-0" VINYL PRIVACY & RETURN FENCE.
 - LATCHING HARDWARE.
 - FINISH GRADE.

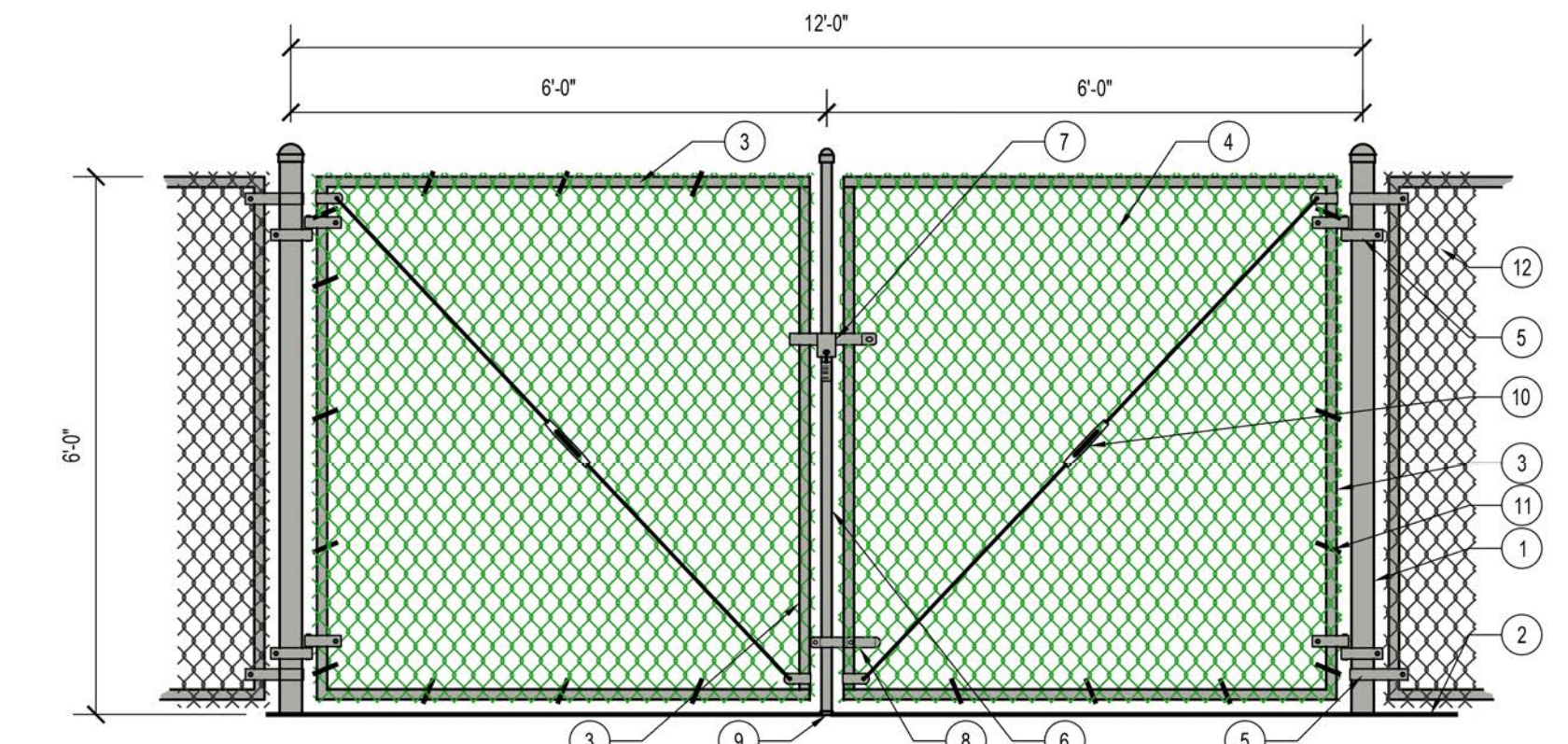
E 3'-0" WIDE VINYL SIDE YARD GATE
SCALE: NOT TO SCALE



- LEGEND:**
- 3" SQ. 11 GA. TUBULAR STEEL FENCE POST.
 - FORGED IRON OR CAST STEEL BALL FINAL.
 - 5/8" x 11 GA. TUBULAR STEEL PICKET WITH SPEAR TOP. WELD TO RAILS AT TOP AND BOTTOM.
 - 1-1/4" SQ. x 11 GA. TUBULAR STEEL RAIL, TOP AND BOTTOM WELD TO POSTS.
 - FINISH GRADE / FINISH SURFACE.

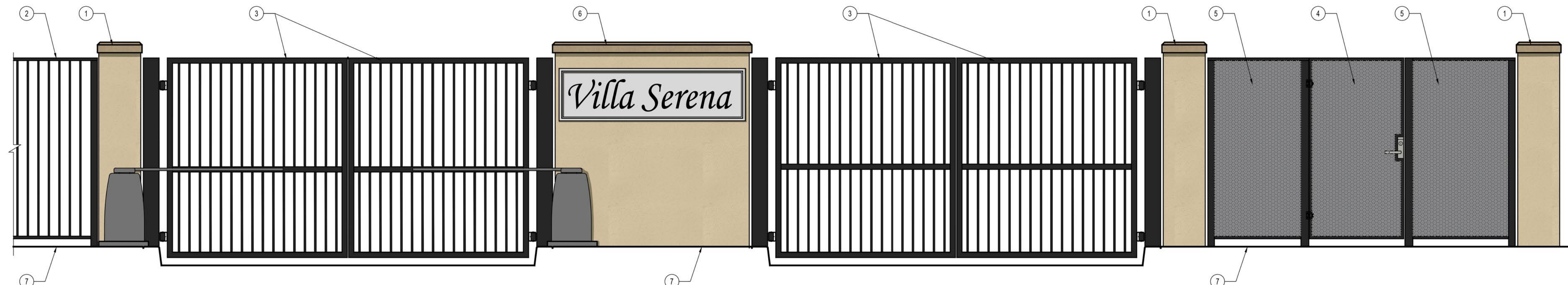
- NOTES:**
- TUBULAR STEEL ELEMENTS SHALL BE PAINTED 'ARMY GREEN.' FINAL RAIL COLOR TO BE APPROVED.
 - BALL FINALS SHALL BE PAINTED 'GOLD.' FINAL RAIL COLOR TO BE APPROVED.

F TUBULAR STEEL BASIN FENCING
SCALE: NOT TO SCALE



- LEGEND:**
- 2-1/2" O.D. GALVANIZED PIPE GATE POST, CLOSE TOP w/ DOME CAP (TYP).
 - ADJACENT PAINTED FINISH SURFACE PER PLAN.
 - 1-3/8" O.D. GALVANIZED PIPE GATE FRAME.
 - GALV. MESH FABRIC WITH 'GREEN' COLOR VINYL COATING. KNUCKLE ENDS OF FABRIC.
 - HEAVY DUTY MALLEABLE IRON 'FULL-BACK' GATE HINGE (2) PER GATE.
 - 1-3/8" DIA. HEAVY DUTY DROP ROD WITH WELD-ON BALL CAP.
 - HEAVY INDUSTRIAL FORK. WELD TO 1-3/8" DROP ROD. PROVIDE PADLOCK AND (2) KEYS.
 - DROP ROD GUIDE. ATTACH TO GATE FRAME WITH BOLTS (2) PLACES.
 - 1-4/8" STOPPER WELDED TO DROP ROD.
 - TENSION BAR WITH TURNBUCKLE.
 - 6 GAUGE ALUMINUM WIRE TIES AT 18" O.C.
 - ADJACENT CHAIN LINK FENCE PER PLAN.

G 12' WIDE DOUBLE CHAIN LINK GATE
SCALE: NOT TO SCALE



- LEGEND:**
- 16" SQ. CMU BLOCK COLUMN WITH 'TAN' COLOR STUCCO AND 'TAN' COLOR PRECISION BEVELED CAP.
 - PERIMETER 6'-0" HIGH TUBULAR STEEL FENCE.
 - AUTOMATED, DOUBLE-SWING, TUBULAR STEEL VEHICULAR GATE WITH MOTOR.
 - PEDESTRIAN GATE WITH PERFORATED BARRIER AND KEYED OR FOR ACCESS CONTROL.
 - TUBULAR STEEL WING FENCE WITH PERFORATED BARRIER EACH SIDE OF PEDESTRIAN GATE.
 - ENTRY MONUMENT CMU BLOCK WALL WITH 'TAN' COLOR STUCCO, 'TAN' COLOR PRECISION BEVELED CAP, AND PRECAST NATURAL GRAY COMMUNITY SIGNAGE WITH LETTERS PAINTED BLACK.
 - FINISH SURFACE / FINISH GRADE.

H GATED COMMUNITY PRIMARY ENTRY
SCALE: 1/2" = 1'-0"

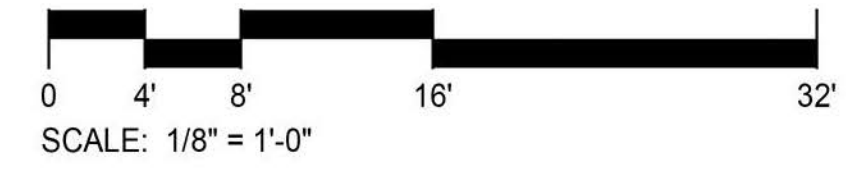
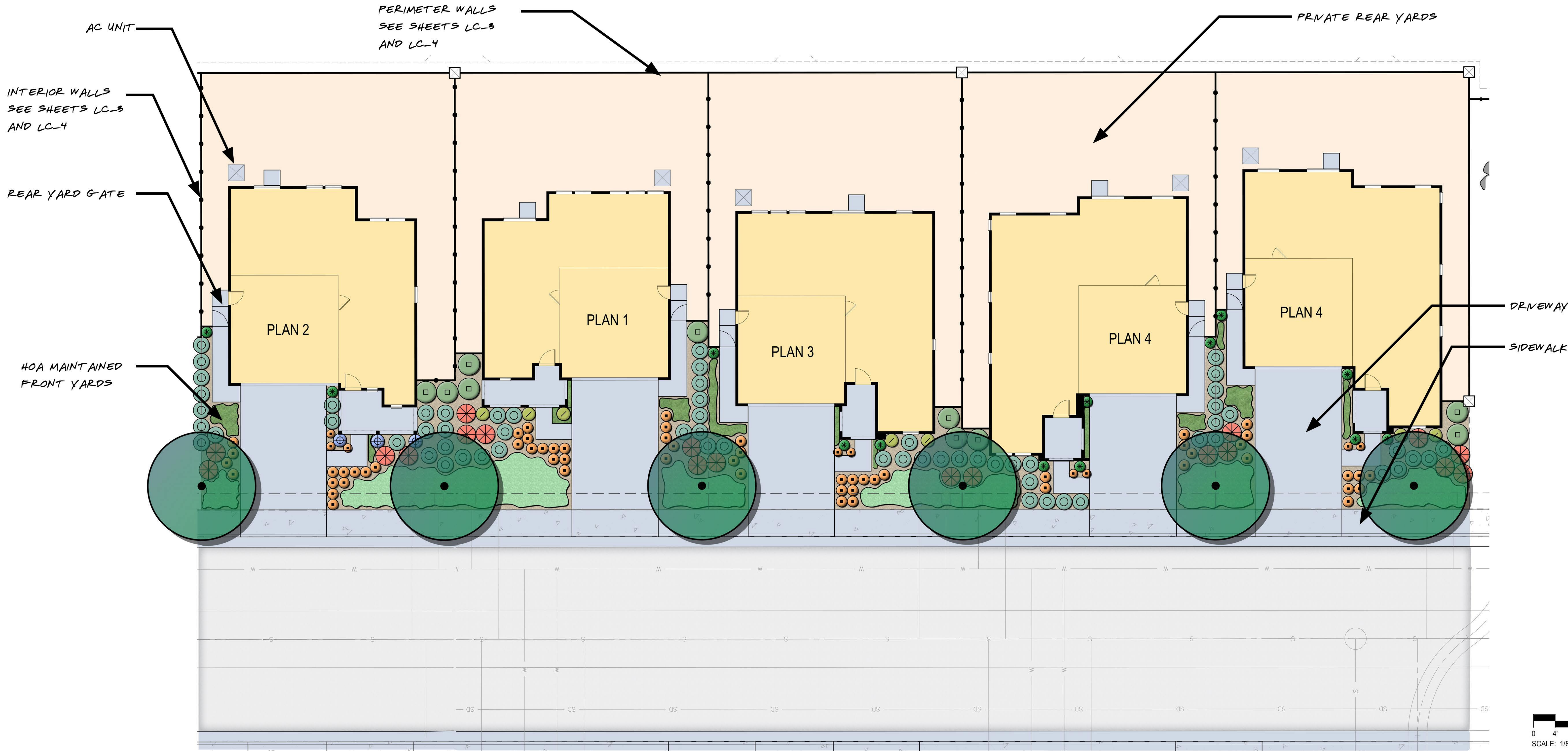
07/20/21



KB HOMES
VILLA SERENA GATED COMMUNITY
CONCEPTUAL WALL AND FENCE DETAILS
TM 20245, CITY OF UPLAND, CALIFORNIA



LC-5



PLANTING LEGEND 'A' - SPANISH:

SYMBOL / CALLOUT	BOTANICAL NAME	COMMON NAME	SIZE	SPACING	COMMENTS	WATER USE
EAST-WEST FRONT YARD TREES:						
T-1	Quercus ilex	Holly Oak	24" Box	Per Plan	Standard	L
SHRUBS:						
	Euryops v. pectinatus	Green-leaved Euryops	5 Gal.	Per Plan	Patio Tree Form	L
	Cupressus s. 'Monahel'	Tiny Tower Italian Cypress	5 Gal.	Per Plan		L
	Laurus nobilis	Sweet Bay	5 Gal.	48" O.C.		L
	Leucadendron 'Safari Sunset'	Safari Sunset Conebush	5 Gal.	Per Plan		M
	Olea s. 'Little Olive'	Little Olive Dwarf Olive	5 Gal.	36" O.C.		L
	* Rhamnus californica	Coffeeberry	**	**		*
	Salvia l. 'Santa Barbara'	Santa Barbara Mexican Bush Sage	5 Gal.	36" O.C.		L
	Aloe 'Blue Elf'	Wall Germander	1 Gal.	24" O.C.		L
GROUND COVER:						
	Rosmarinus o. 'Prostratus'	Dwarf Creeping Rosemary	1 Gal.	36" O.C.		L
	Juniperus h. 'Blue Chip'	Blue Chip Juniper	**	**		*
	Dianella r. 'Little Rev'	Little Rev Flax Lily	1 Gal.	18 O.C.		L

PLANTING LEGEND 'B' - ITALIANATE:

SYMBOL / CALLOUT	BOTANICAL NAME	COMMON NAME	SIZE	SPACING	COMMENTS	WATER USE
FRONT YARD TREES:						
T-1	Quercus ilex	Holly Oak	24" Box	Per Plan	Standard	L
SHRUBS:						
	Solanum r. 'Royal Robe'	Royal Robe Paraguay Nightshade	5 Gal.	Per Plan	Patio Tree Form	M
	Cupressus s. 'Monahel'	Tiny Tower Italian Cypress	5 Gal.	Per Plan		L
	Laurus nobilis	Sweet Bay	15 Gal.	48" O.C.		L
	Callistemon v. 'Slim'	Slim Bottlebrush	5 Gal.	Per Plan		M
	* Carpentaria c. 'Elizabeth'	Bush Anemone 'Elizabeth'	**	**		*
	Olea s. 'Little Olive'	Little Olive Dwarf Olive	5 Gal.	36" O.C.		L
	* Rhamnus californica	Coffeeberry	**	**		*
	Phlomis frutescens	Jerusalem Sage	5 Gal.	36" O.C.		L
	Lavandula s. 'Otto Quast'	Otto Quast Spanish Lavender	1 Gal.	24" O.C.		L
GROUND COVER:						
	Rosmarinus o. 'Prostratus'	Dwarf Creeping Rosemary	1 Gal.	36" O.C.		L
	Juniperus h. 'Blue Chip'	Blue Chip Juniper	**	**		*
	Dianella r. 'Little Rev'	Little Rev Flax Lily	1 Gal.	18 O.C.		L

PLANTING LEGEND 'C' - FRENCH COUNTRY:

SYMBOL / CALLOUT	BOTANICAL NAME	COMMON NAME	SIZE	SPACING	COMMENTS	WATER USE
EAST-WEST FRONT YARD TREES:						
T-1	Quercus ilex	Holly Oak	24" Box	Per Plan	Standard	L
SHRUBS:						
	Alyogyne huegelii	Blue Hibiscus	5 Gal.	Per Plan	Patio Tree Form	L
	Rhamnus californica	Magnificent Indian Hawthorne	**	**	**	M
	Cupressus s. 'Monahel'	Tiny Tower Italian Cypress	5 Gal.	Per Plan		L
	Laurus nobilis	Sweet Bay	15 Gal.	48" O.C.		L
	Berberis 'Orange Rocket'	Orange Rocket Barberry	5 Gal.	Per Plan		M
	* Nandina d. 'Sienna Sunrise'	Sienna Sunrise Heavenly Bamboo	**	**		*
	Olea s. 'Little Olive'	Little Olive Dwarf Olive	5 Gal.	36" O.C.		L
	* Rhamnus californica	Coffeeberry	**	**		*
	Rosa f. 'Iceberg'	White Iceberg Rose	5 Gal.	36" O.C.		M
	Salvia x 'May Night'	May Night Meadow Sage	1 Gal.	24" O.C.		M
GROUND COVER:						
	Rosmarinus o. 'Prostratus'	Dwarf Creeping Rosemary	1 Gal.	36" O.C.		L
	Juniperus h. 'Blue Chip'	Blue Chip Juniper	**	**		*
	Dianella r. 'Little Rev'	Little Rev Flax Lily	1 Gal.	18 O.C.		L

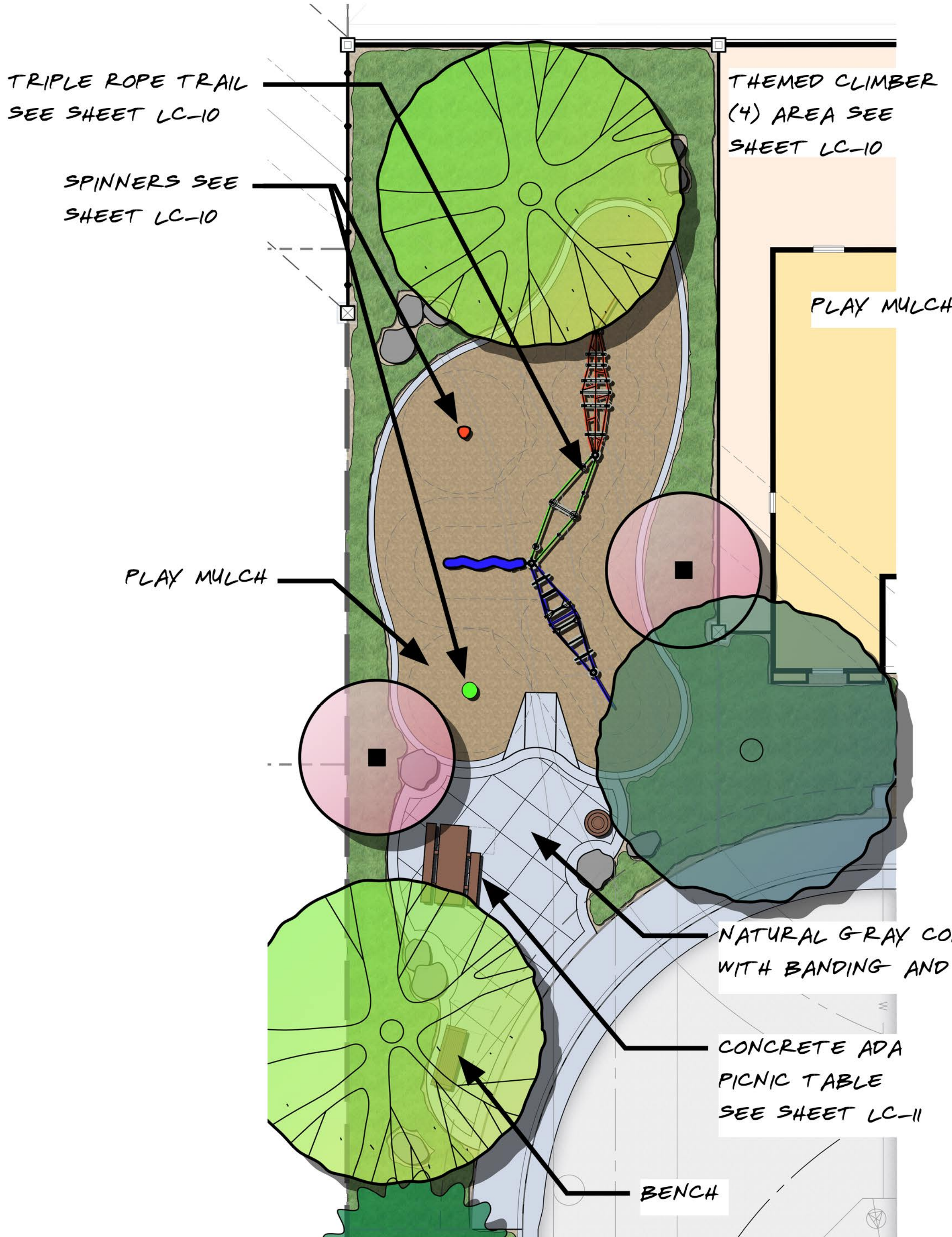
07/20/21



KB HOMES
VILLA SERENA GATED COMMUNITY
TYPICAL HOA FRONT YARD CONCEPTUAL LANDSCAPE PLAN
TM 20245, CITY OF UPLAND, CALIFORNIA

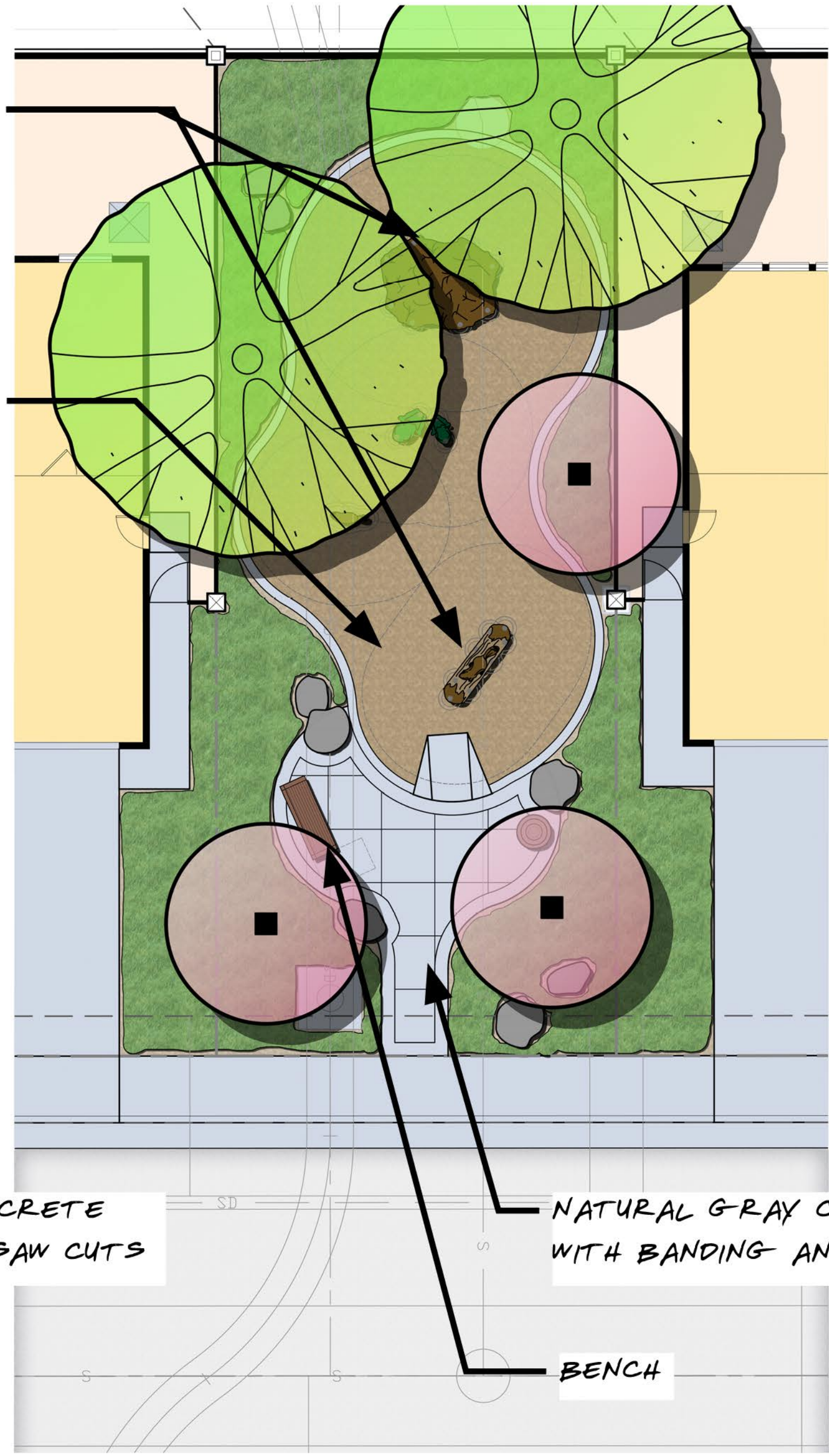


LC-6



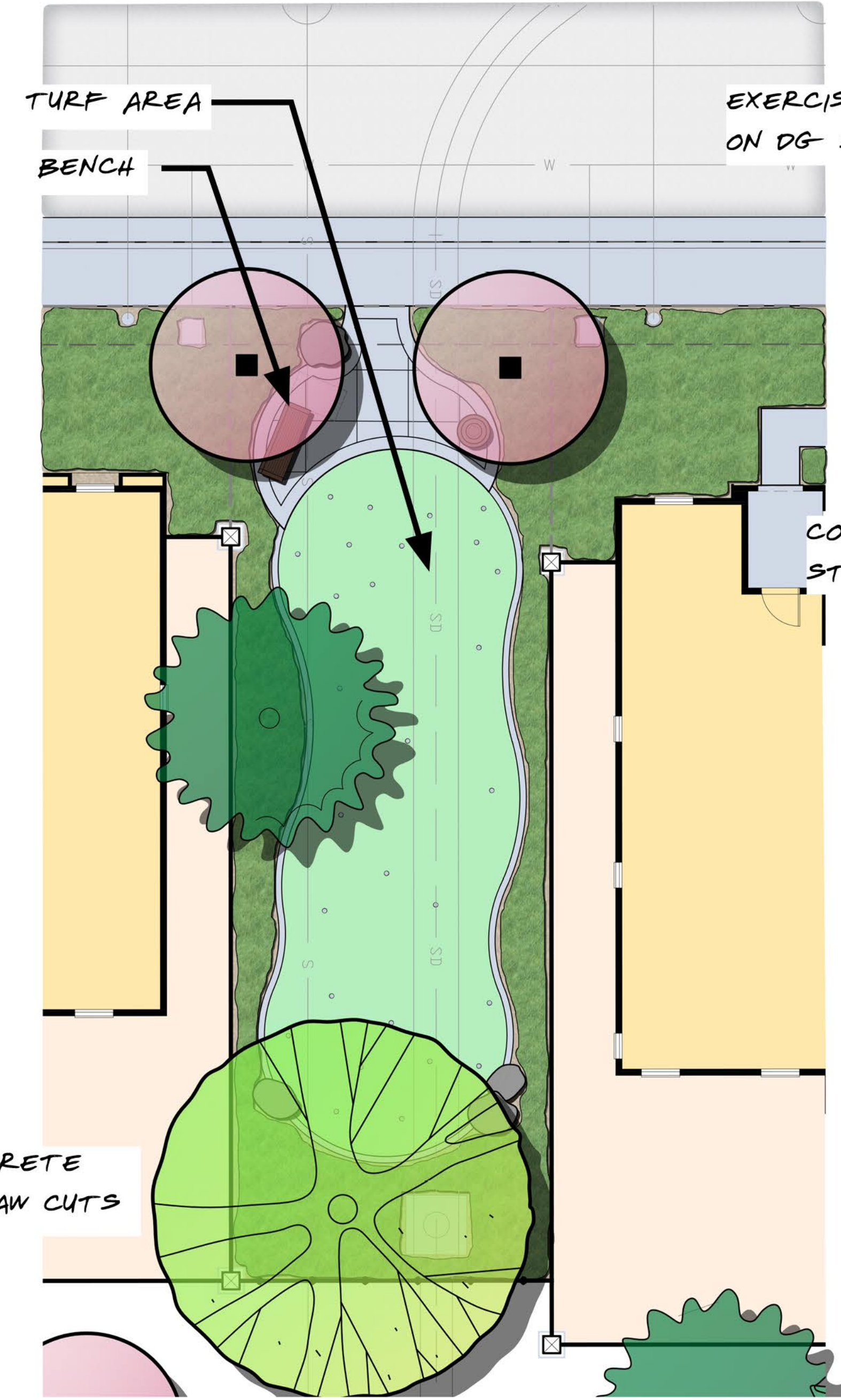
A LOT 'B' POCKET PARK ENLARGEMENT
SCALE: 1/8" = 1'-0"

(PRIVATE)



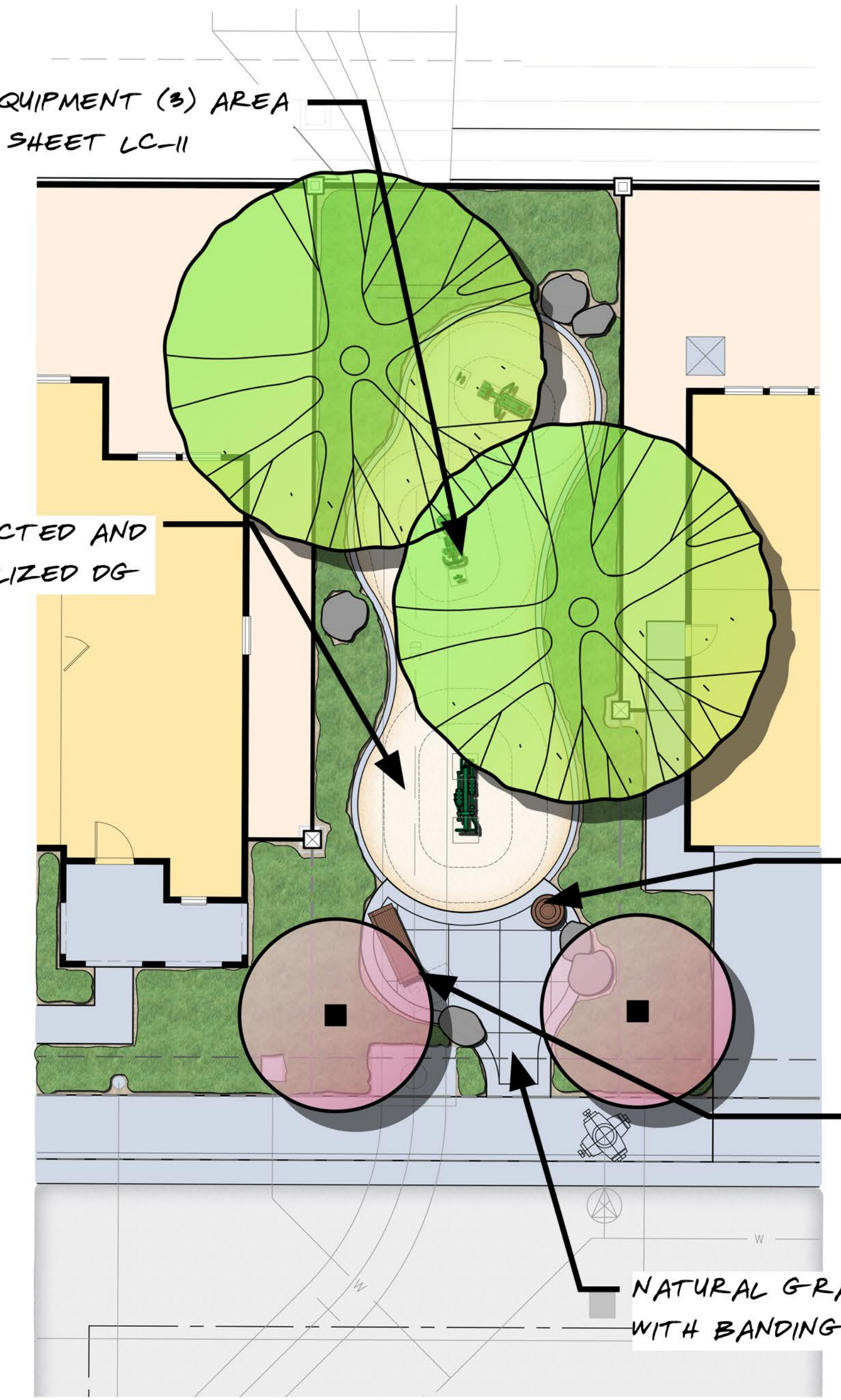
B LOT 'C' POCKET PARK ENLARGEMENT
SCALE: 1/8" = 1'-0"

(PRIVATE)



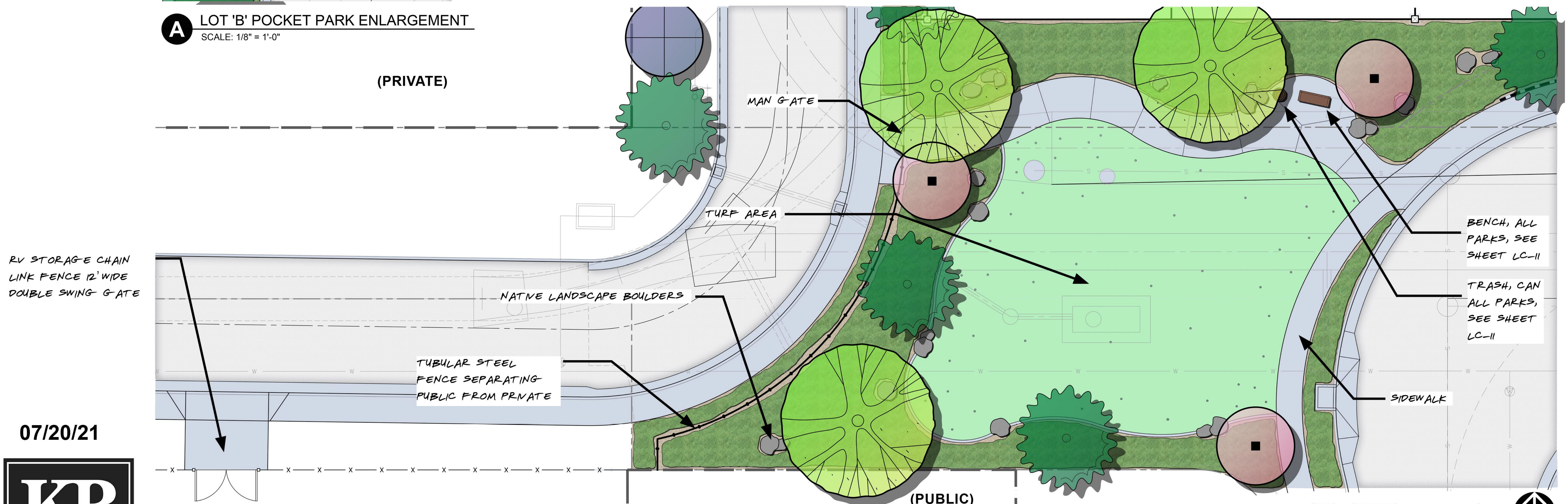
C LOT 'I' POCKET PARK ENLARGEMENT
SCALE: 1/8" = 1'-0"

(PRIVATE)



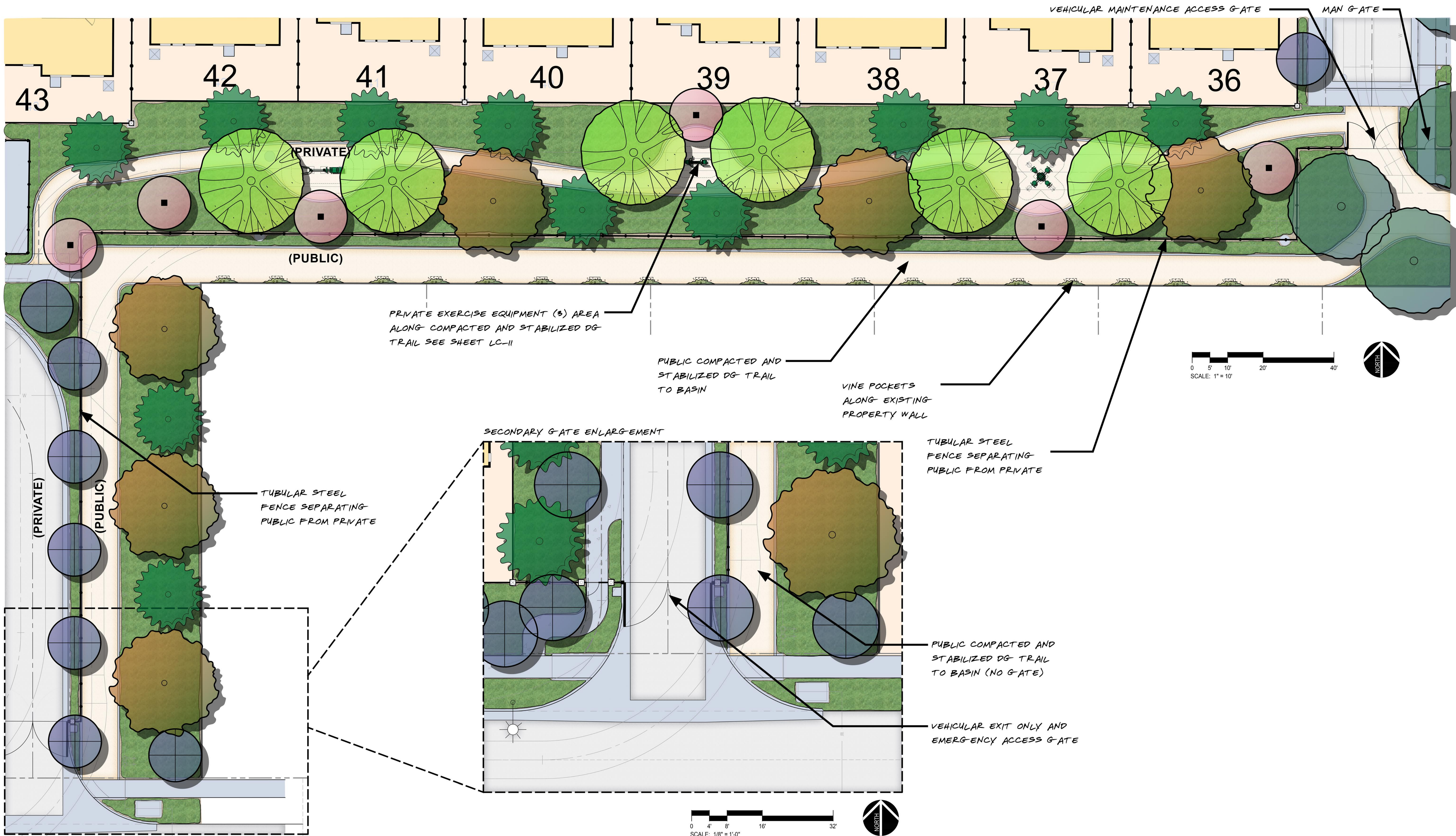
D LOT 'D' POCKET PARK ENLARGEMENT
SCALE: 1/8" = 1'-0"

(PRIVATE)



E LOT 'H' KNUCKLE POCKET PARK ENLARGEMENT
SCALE: 1/8" = 1'-0"

POCKET PARK CONCEPTUAL LANDSCAPE ENLARGEMENTS
TM 20245, CITY OF UPLAND, CALIFORNIA



07/20/21



KB HOMES

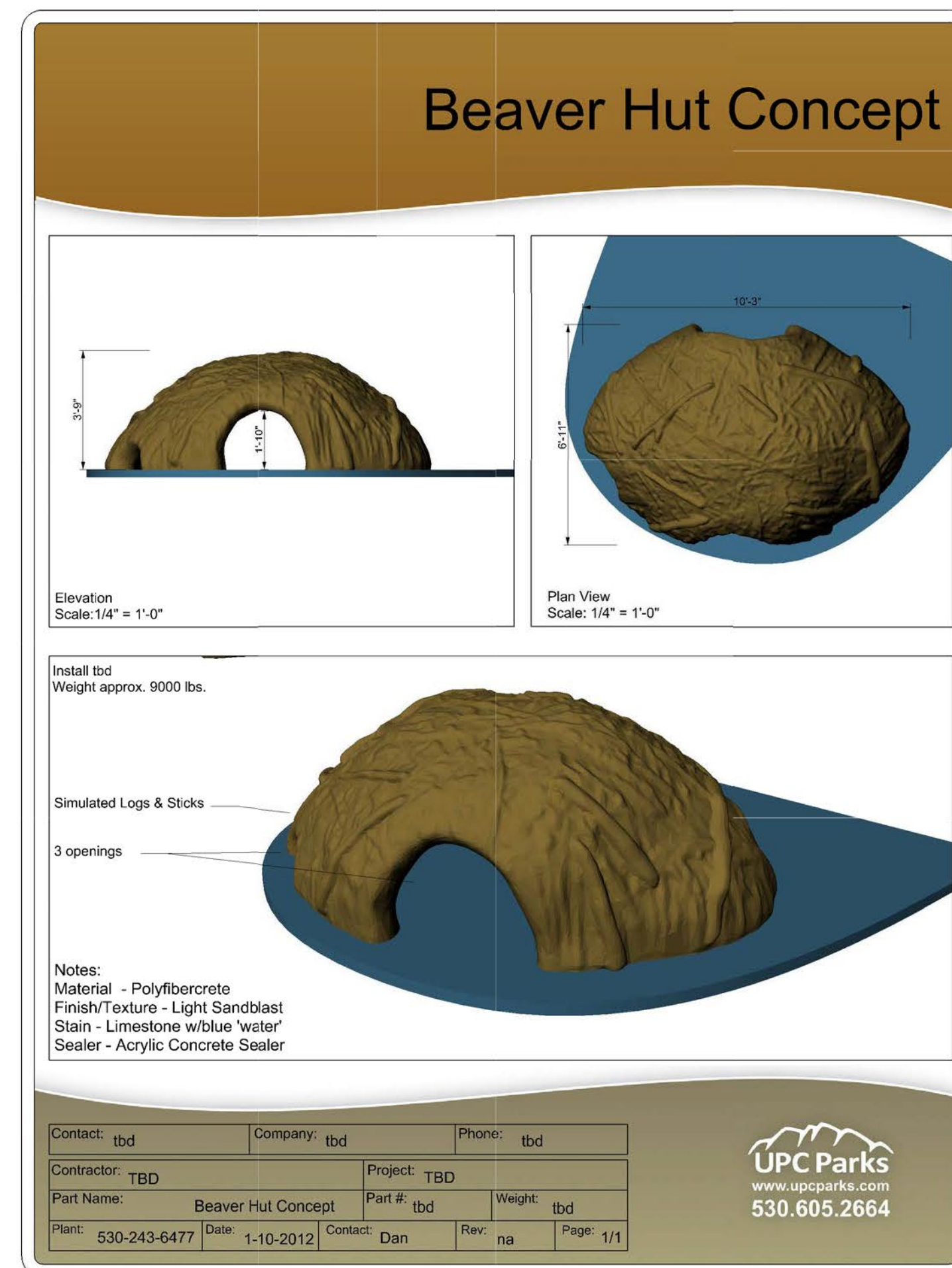
VILLA SERENA GATED COMMUNITY

TRAIL & POCKET PARK LOT 'E' CONCEPTUAL LANDSCAPE ENLARGEMENT

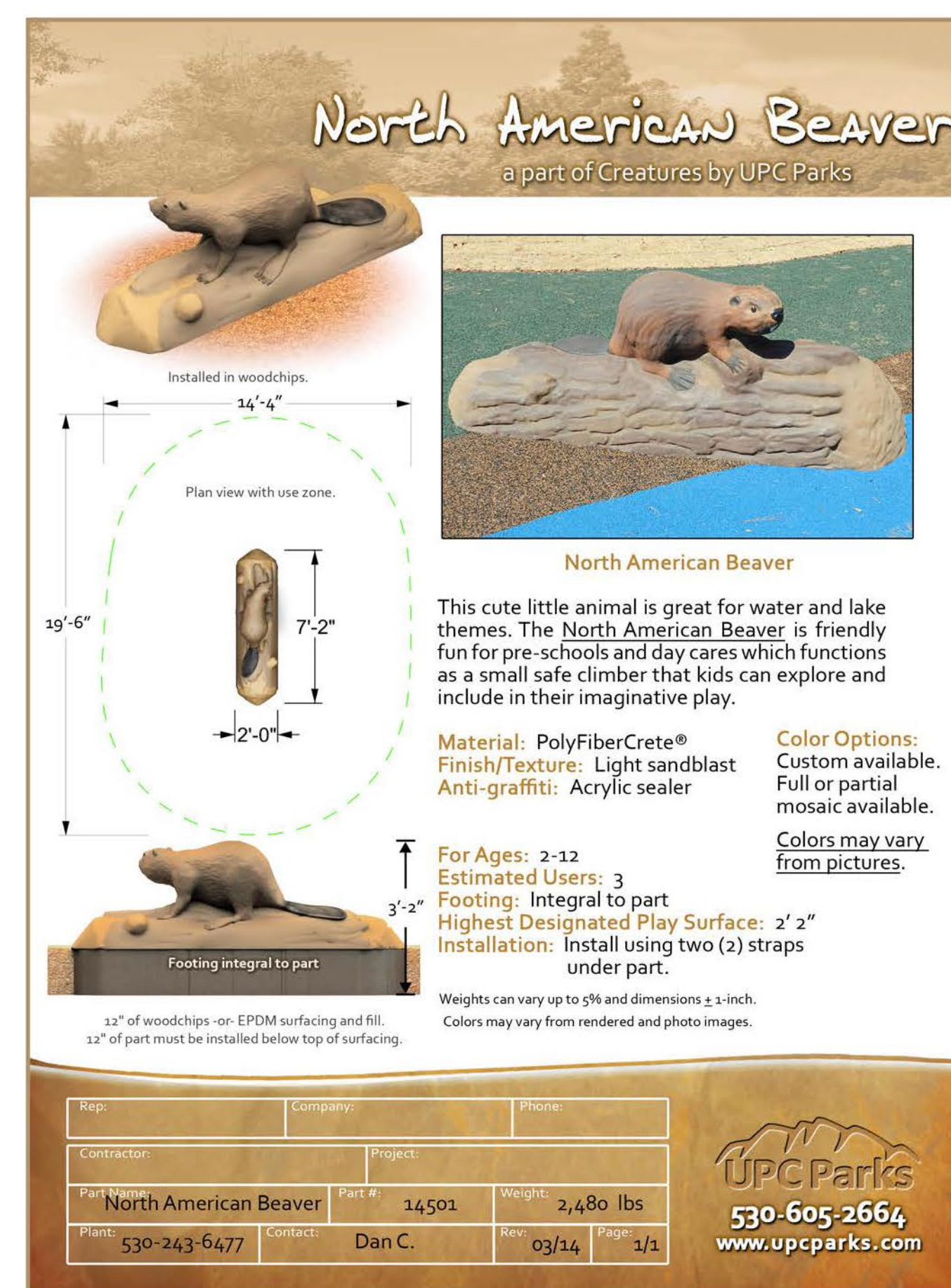
TM 20245, CITY OF UPLAND, CALIFORNIA



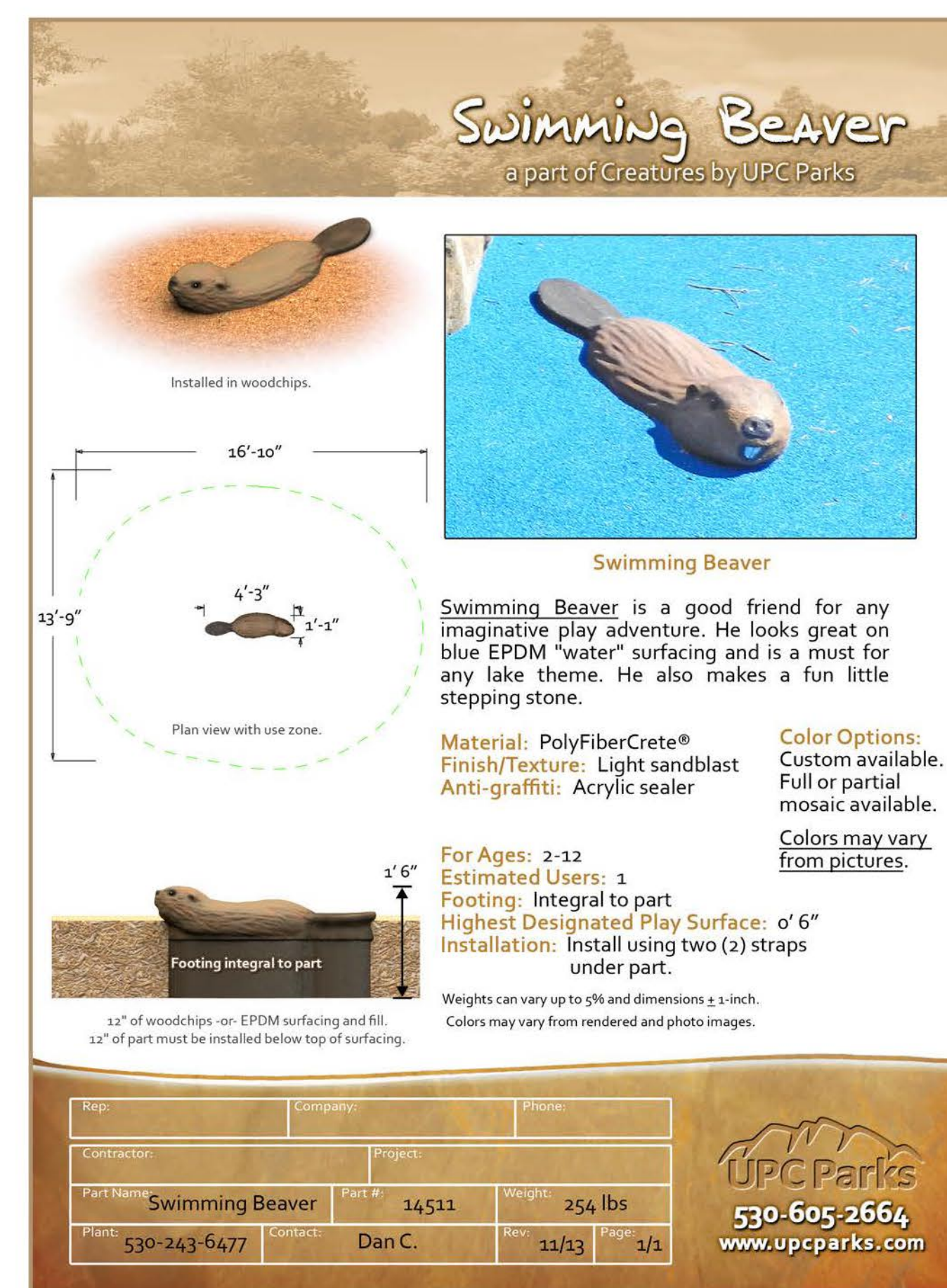
LC-9



PROPOSED AT POCKET PARK LOT 'C' SEE SHEET LC-8



PROPOSED AT POCKET PARK LOT 'C' SEE SHEET LC-8



PROPOSED AT POCKET PARK LOT 'C' SEE SHEET LC-8



PROPOSED AT POCKET PARK LOT 'C' SEE SHEET LC-8



The Triple Rope Trail is rich in versatile, bouncing climbing experiences for ages 3 and up. This attracts children and keeps them playing together for a long time, again and again. The climbing walls are great starting points. The climbing trains coordination, which stimulates brain activity necessary for reading. Older children are challenged by the Rocking

Tube. The three fun climbing links between offer wobbly, swaying, bouncy climbs with vertical supportpoints for seating or hanging. The responsive climb trains children's balance, coordination and spatial awareness. These motor skills are crucial for managing the world securely, or even sitting still and concentrating. The many restpoints allow for socialization and

offer a point from which less confident climbers can plan their next moves.

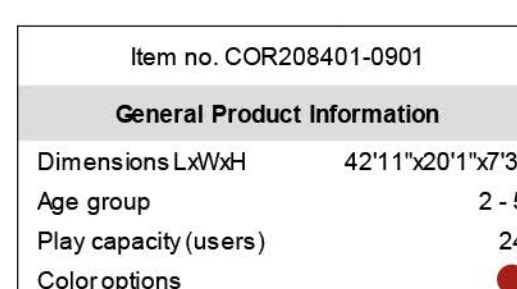


1 / 34/2021

PROPOSED AT POCKET PARK LOT 'B' SEE SHEET LC-8



Spinner Bowl



This wildly or mildly spinning piece with its cute rounded design evokes squeals of joy when children rotate again and again. With its easily accessible, tilted spinning bowl it invites children of all abilities and a wide age span to play. The small footprint allows for placing 2-3 Spinner Bowls together, encouraging social play. The variety of play opportunities include

sitting in, on edge of, pushing, pulling or even standing in the spinner bowl. These make the Spinner Bowl a long-time attraction. The tilted bowl allows the child to adjust the spinning speed with their body movements. This trains the logical thinking to speed up by scooping up or slow down by spreading arms and legs out. Spinner Bowls train the sense of balance,

which is mandatory for concentration skills and the ability to sit still. Pushing or being pushed by others trains social-emotional skills such as turn-taking.

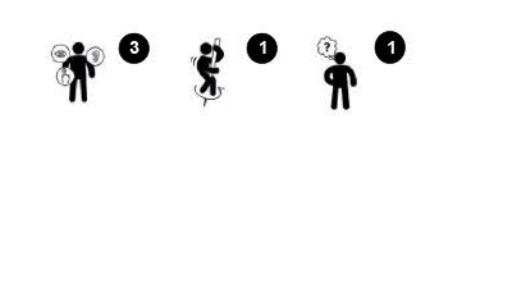


1 / 3/4/2021

PROPOSED AT POCKET PARK LOT 'B' SEE SHEET LC-8



Spica 1



The quirky shapes, toothy top and triangle platform invite curious 5-12 year olds to investigate the Spica. The rotating movement of the Spica is at the center. It takes exploration to reach the point of total mastery of spinning. The curved pole invites holding onto and the child figures out that leaning into the pole means intense spinning speed, leaning out means

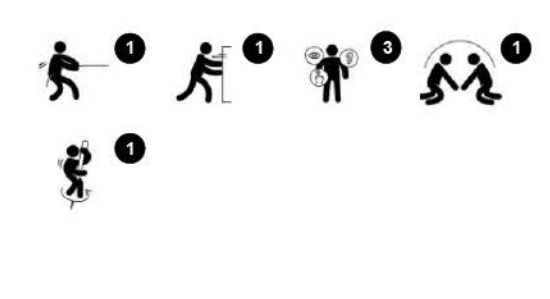
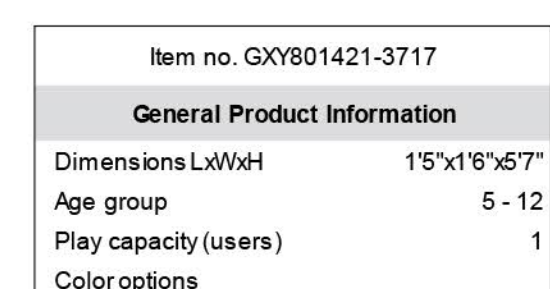
slowing down speed. This will appeal and make play go on and on, even when children are hanging in their arms. Getting to master the rotation element stimulates the cognitive skills of the child, in particular the logical thinking. The agility, balance and coordination are intensively trained as the Spica invites different body positions when spinning. The triangular

shape of the seat allows room for up to three children, stimulating the social skills of cooperation and turn-taking.



1 / 3/4/2021

PROPOSED AT POCKET PARK LOT 'B' SEE SHEET LC-8



Data is subject to change without prior notice.

1 / 3/4/2021

07/20/21



KB HOMES
VILLA SERENA GATED COMMUNITY
POCKET PARK PLAY EQUIPMENT AMENITIES BOARD
TM 20245, CITY OF UPLAND, CALIFORNIA



LC-10

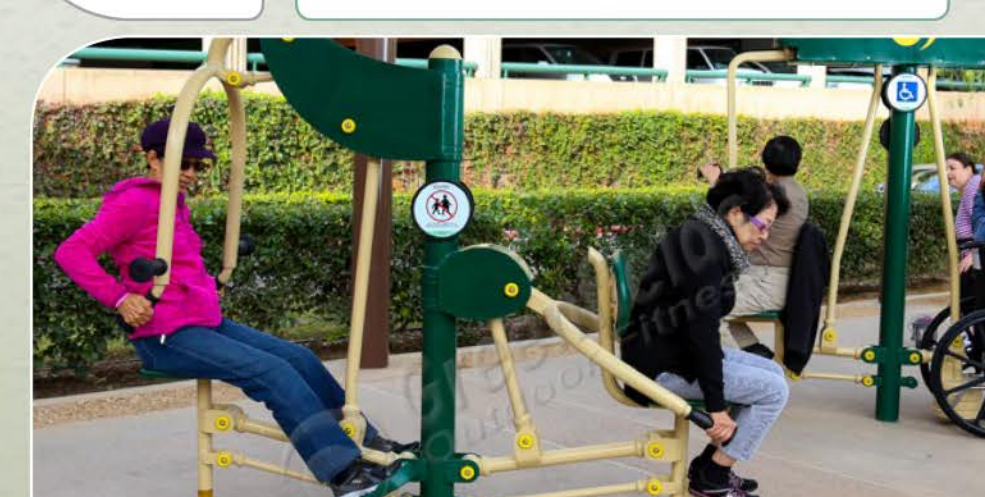


TWO-PERSON BACK & ARMS COMBO

SGR2005-1-42



- Strengthens back, biceps, triceps and chest
 - Can be used by two people simultaneously
- Target muscles
Secondary muscles



Greenfields' units are designed to accommodate the majority of users age 14 and above; however, due to the nature of outdoor fitness equipment, units are "one size fits most". In order to honor our commitment to quality and safety, Greenfields Outdoor Fitness reserves the right to make changes and revise the design specifications without notice.



UPRIGHT BIKE

SGR2005-1-89

- Strengthens calves, hamstrings, glutes and quadriceps.
 - Low impact
 - Resistance-free
- Target muscles
Secondary muscles



Greenfields' units are designed to accommodate the majority of users age 14 and above; however, due to the nature of outdoor fitness equipment, units are "one size fits most". In order to honor our commitment to quality and safety, Greenfields Outdoor Fitness reserves the right to make changes and revise the design specifications without notice.



ROWING MACHINE

SGR2005-1-91

Equipped with **SafeStop**

- Strengthens back muscles, shoulders, arm muscles and abdominals
 - Improves cardiovascular endurance
- Target muscles
Secondary muscles



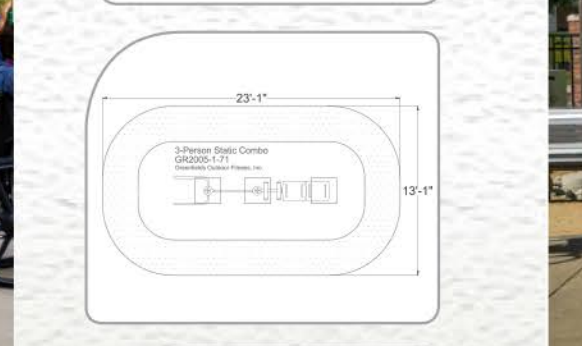
Greenfields' units are designed to accommodate the majority of users age 14 and above; however, due to the nature of outdoor fitness equipment, units are "one size fits most". In order to honor our commitment to quality and safety, Greenfields Outdoor Fitness reserves the right to make changes and revise the design specifications without notice.



THREE-PERSON STATIC COMBO

SGR2005-1-71

- Strengthens upper back, shoulders, biceps and core
- Target muscles
Secondary muscles



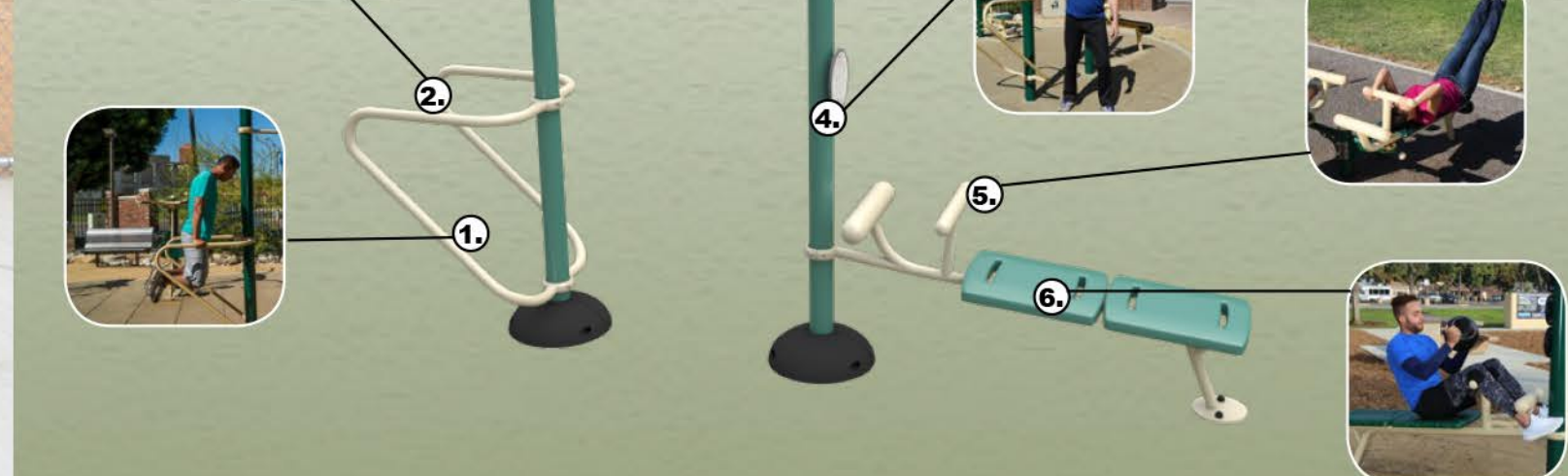
Greenfields' units are designed to accommodate the majority of users age 14 and above; however, due to the nature of outdoor fitness equipment, units are "one size fits most". In order to honor our commitment to quality and safety, Greenfields Outdoor Fitness reserves the right to make changes and revise the design specifications without notice.



3-Person Static Combo

SGR2005-1-77

- Includes exercises:
1. Dips
 2. Assisted Squats
 3. Chin Ups/Pull-Ups
 4. Stretching
 5. Incline Leg Raises
 6. Incline Sit-Ups
- Target muscles
Secondary muscles



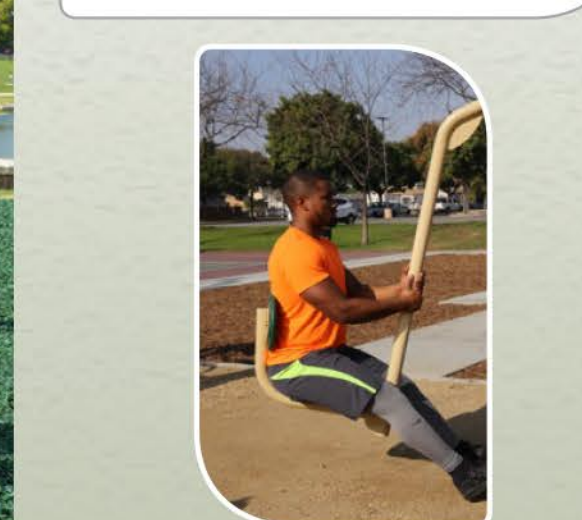
Greenfields' units are designed to accommodate the majority of users age 14 and above; however, due to the nature of outdoor fitness equipment, units are "one size fits most". In order to honor our commitment to quality and safety, Greenfields Outdoor Fitness reserves the right to make changes and revise the design specifications without notice.



FOUR-PERSON LEG PRESS

SGR2005-1-104N

- Strengthens abdominals and leg muscles, particularly quads and calves
 - Great social activity
 - Can be used by four people simultaneously
- Target muscles
Secondary muscles



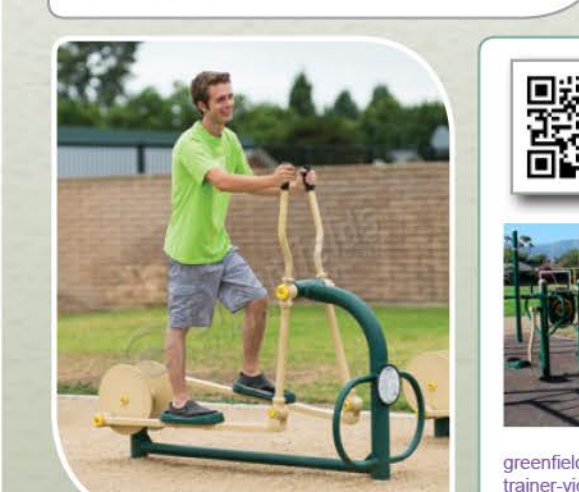
Greenfields' units are designed to accommodate the majority of users age 14 and above; however, due to the nature of outdoor fitness equipment, units are "one size fits most". In order to honor our commitment to quality and safety, Greenfields Outdoor Fitness reserves the right to make changes and revise the design specifications without notice.



SINGLE ELLIPTICAL

SHP2009-5-03

- Strengthens leg muscles
 - Improves cardiovascular endurance
- Target muscles
Secondary muscles



Greenfields' units are designed to accommodate the majority of users age 14 and above; however, due to the nature of outdoor fitness equipment, units are "one size fits most". In order to honor our commitment to quality and safety, Greenfields Outdoor Fitness reserves the right to make changes and revise the design specifications without notice.

MODEL #100SRE CONCRETE PICNIC TABLE WITH RIGHT SIDE WHEELCHAIR ACCESS	OUTDOOR CREATIONS, INC. CUSTOMER APPROVAL x	SCALE: 1" = 32" DRAWN BY: MMC	MAN. TOL. +/- 1/4"
---	--	----------------------------------	--------------------

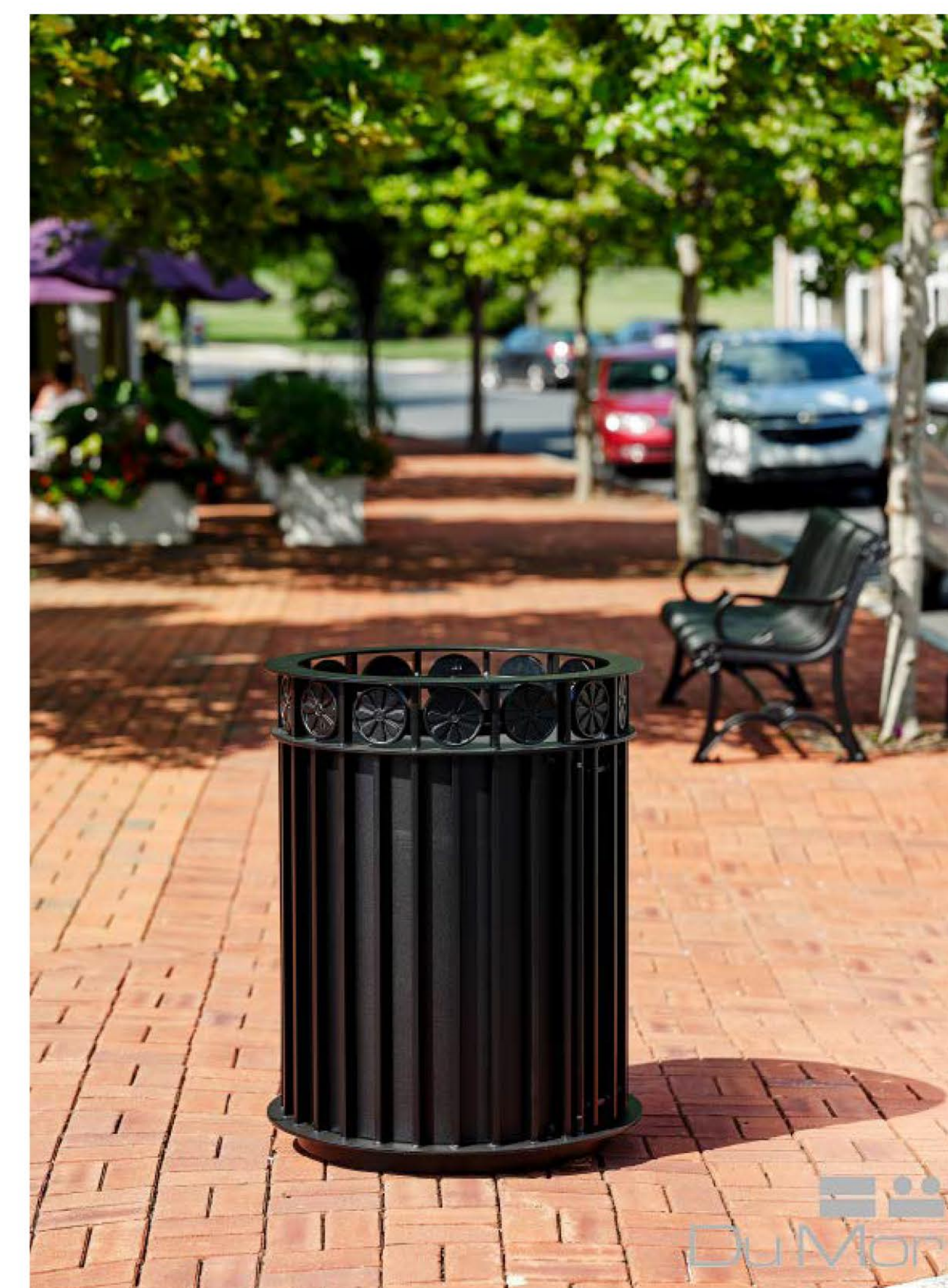
NOTES:

1. Concrete mix design to include a mixture of Portland Cement, water, coarse and fine aggregates, pure mineral oxide coloring agents (when applicable) to yield a minimum compressive strength of 5000 psi.
2. First product shall be reinforced with #4 and #5 rebar grid.
3. Product to cast in 1-piece with no assembly required.
4. Hairline cracks may develop over time. These are not structural failures, but inherent characteristics of the material used.
5. All pockets are a common occurrence in precast products. The frequency and size of air pockets are variable and to be expected, especially on vertical surfaces.
6. Concrete corners and edges will chip if not handled according to guidelines. Patch kits are available but may or may not blend and can be visible.
7. There is a level of care and maintenance associated with your product and is the responsibility of the end user. Choosing the right sealer can help minimize those costs.

WEIGHT: 2450 LBS
TEXTURE:
COLOR:
SEALER:

OUTDOOR CREATIONS, INC.
2211 Danny Street
Anderson, CA 96007
(530) 965-4100
FAX (530) 965-5120

PROPOSED AT PARK LOT 'B' SEE SHEET LC-8



PROPOSED AT MOST POCKET PARKS SEE SHEET LC-8

07/20/21



KB HOMES

VILLA SERENA GATED COMMUNITY

POCKET PARK EXERCISE EQUIPMENT & FURNISHING AMENITIES BOARD

TM 20245, CITY OF UPLAND, CALIFORNIA



LC-11