



**Public Works Committee Meeting
October 8, 2024
INFRASTRUCTURE MASTER PLANS
FOR PAVEMENT AND SIDEWALKS**

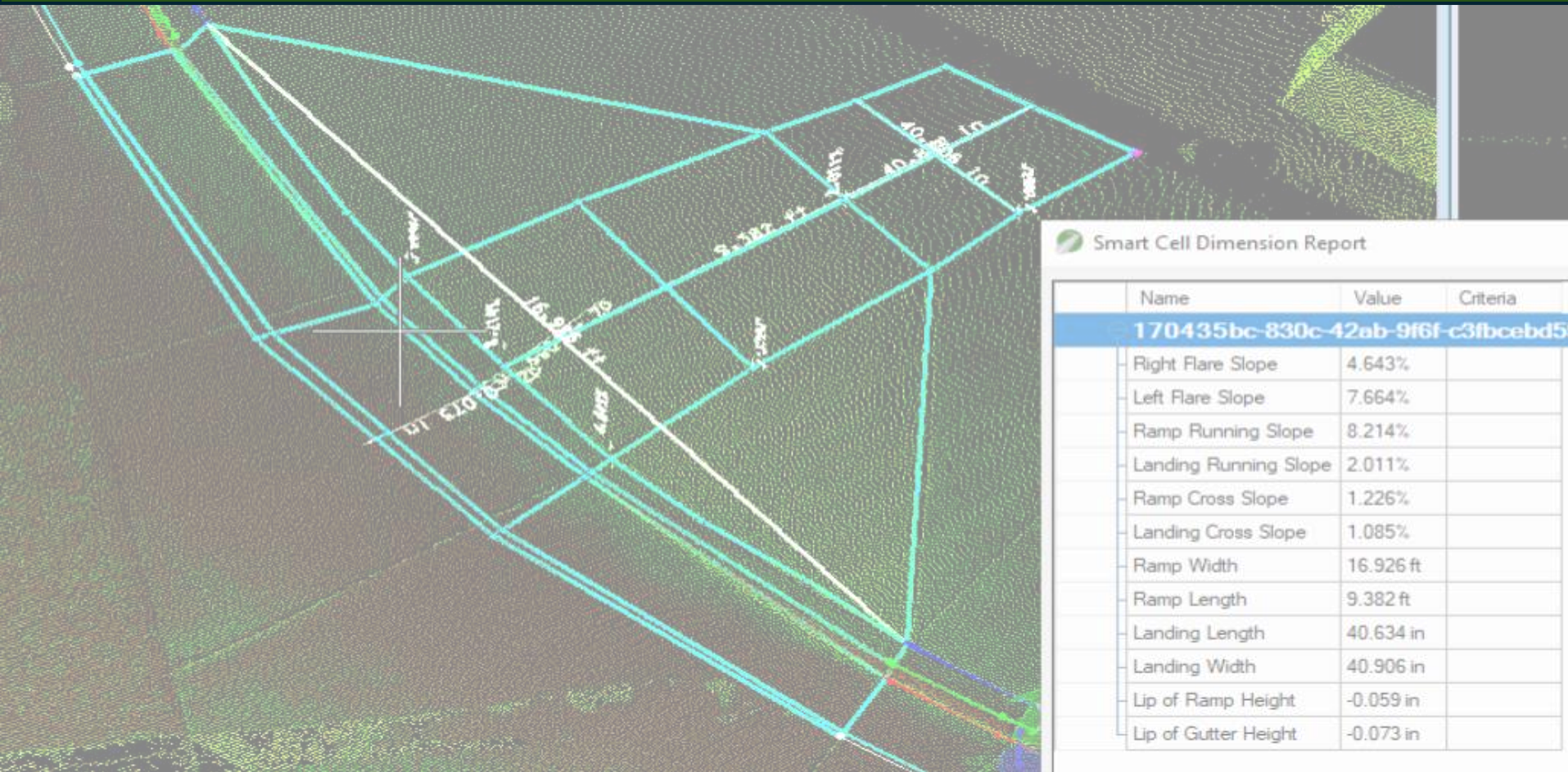


TIMELINE OF EVENTS

- The American Rescue Plan Act (ARPA) was signed into law on March 11, 2021, by President Joe Biden. ARPA provided funding for various programs, including significant aid to state and local governments to address the fiscal impact of the pandemic.
- City of Upland was awarded ARPA funds June 21, 2021. An outline of use was prepared in October of the same year. The outline included masterplan preparation of the sidewalk and pavement systems.
- IMS, LP was selected as a contractor to perform an inspection and analysis of the sidewalk systems. City Council Approved this contract on August 8, 2022.
- Transmap was selected as a contractor to perform an inspection and analysis of the condition of our roadways and pavement system. City Council Approved this contract on June 26, 2023.
- Public Works received the substantially completed reports in July 2024 from both contractors and is presenting to the Public Works Committee on October 8, 2024, for a recommendation to proceed to City Council for consideration of adoption of the Master Plans.



PROJECT SCOPE-SIDEWALKS



- **Comprehensive condition assessment of 342 miles of sidewalk**
 - Identification and inventory of sidewalk obstructions
 - Estimated rehabilitation needs for sidewalk network
 - Data collection on 4406 pedestrian curb ramps
 - ADA conformity assessment (IMS 1-5 scale)
- **Creation of Sidewalk and Curb Ramp Management plan**



PROJECT SCOPE-PAVEMENT



Comprehensive condition assessment of 192 centerline miles of asphalt paved roads (Arterials, Collectors, & Locals)

- As well as
 - 37 miles of paved alleys
 - 25 parking lots
- Analyzed and assessed the city's Pavement Condition Index (PCI) and outlines a 5-year plan
- Provides various budget options to address the deficiencies in the City's roadways
- **Creation of the Pavement Management plan**



CITY OF UPLAND
CALIFORNIA
INCORPORATED IN 1906

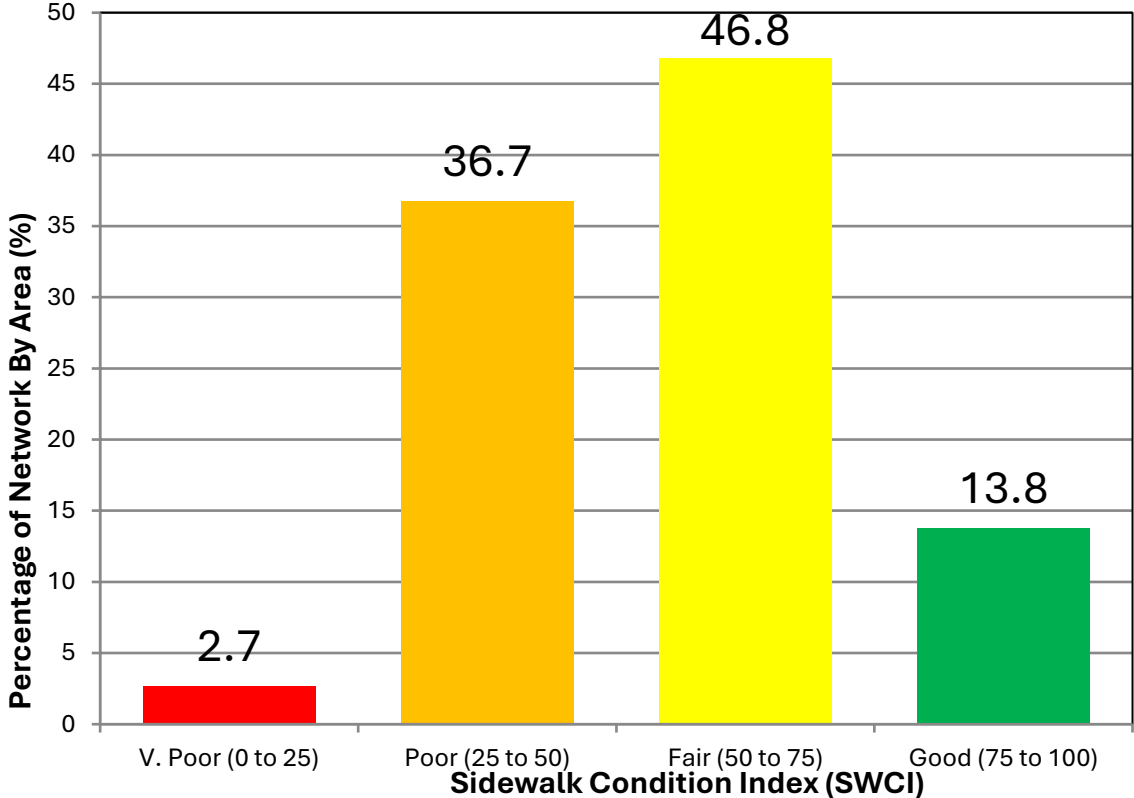
SIDEWALK CONDITIONS

Average Sidewalk Condition:
55 (46.8%)

Total Sidewalk Area:
8.7M Sq Ft

Total Sidewalk Length:
334 Miles

Very Poor Condition: <3%



PAVEMENT CONDITIONS

Median PCI:
61 (Fair)

Total Pavements in Miles:
192 Miles

Total Area in SY :
4,713, 566

Very Poor Condition: 16%

Good (86-100)	17%
Satisfactory (71-85)	20%
Fair (56-70)	22%
Poor (41-55)	17%
Very Poor (26-40)	16%
Serious (11-25)	6%
Failed (0-10)	2%

Sections	2,210
Length in Feet	1,011,858
Length in Miles	191.6
Area SqFt	42,422,094
Area SqYd	4,713,566
Average Width	36.86



HOW IMPORTANT IS THIS TO RESIDENTS?



Pothole & Sidewalk repair requests are the #1 and #2 most frequently requested repair.

- **Over the last 5 years we have received 2,241 roadway and pavement repair requests.**
- **Over the last 5 years we have received 1,208 sidewalk repair requests.**



CITY OF UPLAND
CALIFORNIA
INCORPORATED IN 1906

Fiscal Impacts

Total Sidewalk Sq. Ft
8,700,000

Sidewalks in
Poor Condition
36.7% (3,192,900 sq ft)

Sidewalks in
Very Poor Conditions
2.7% (234,900 sq ft.)

(39.4%) 3,427,800 sq. ft
X \$16/sq ft.
\$54,844,800

Total Pavement Square Yards
4,713,566

Pavement in
Poor Condition
17% (801,306 SY)

Pavement in
Very Poor Conditions
16% (754,170 SY)

(33%) 1,555,476 SY
X \$36 to \$85.50/SY (*)
\$122,037,287

* Square yard cost is dependent on roadway type (arterial, collector, local, alley, or parking lot) and severity of condition.



Report Summary

- Currently, Upland's average Pavement Condition Index (PCI) is 62 – on the lower half of the Fair category, and requiring Critical rehabilitation options.
- Over the next 5 years, the PCI for our streets will decline to Poor – a rating of 52, using only dedicated revenue sources (Gas Tax, Measure I, and RMRA funds).
- Maintaining a current PCI level of Fair would require double the annual funding to \$15.40 million a year.
- To achieve a PCI of 70, which would get our roads to the cusp of the Satisfactory level, would require annual funding of \$26.23 million a year for 5 years.
- Our alleys have a PCI rating of 50 (Poor), with a cost of \$1.86 million needed annually for 5 years to improve them to a rating of 70.
- Our parking lots have a PCI rating of 39 (Very Poor), with a cost of \$1.26 million needed annually for 5 years to improve them to a rating of 70.
- Currently Upland's 334 miles of sidewalk has an average Sidewalk Condition Index (SWCI) is 55 – on the lower half of the Fair category requiring Critical rehabilitation options.



REPAIR PROGRAM FUNDING SOURCES

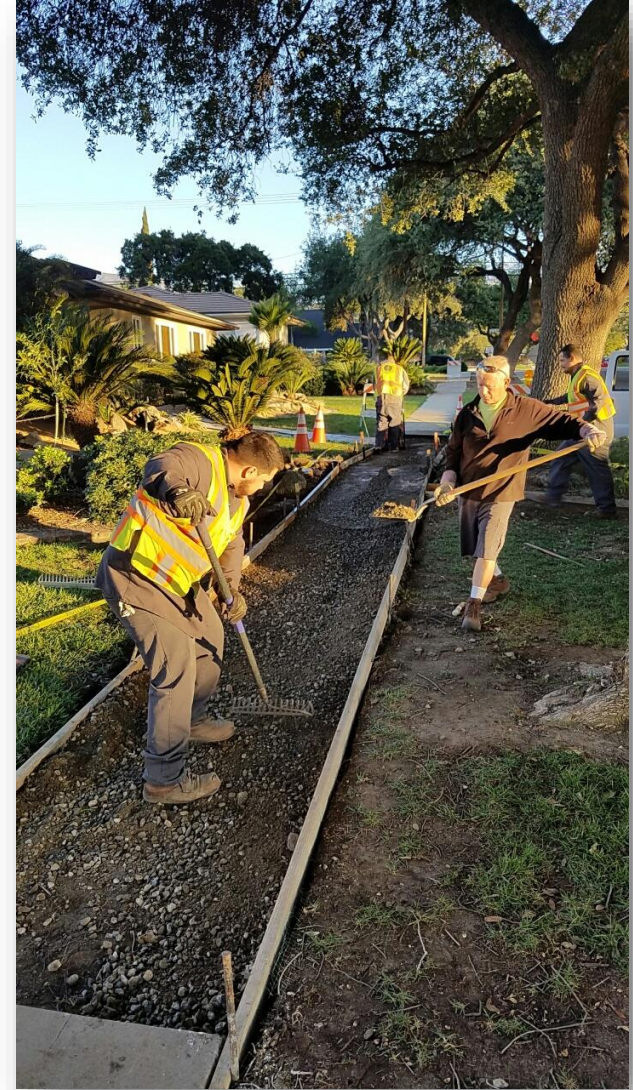
Sidewalk Repair Plan

- Since 1979 temporary fix only
- Unfunded repair program
- Council discretionary funds used from time to time.

Pavement Repair Program

- Funded from RMRA, Gas Tax,& Measure I
- Last years budget for new appropriations from RMRA, Gas Tax,& Measure I were \$4,012,480

Based on this report, there are significant capital costs relating to the implementation of the recommendations on the Sidewalk and Ramp Management and Pavement Management Reports. The total annual cost for the next five years to get all streets, alleys and parking lots to a PCI of 70 and address all sidewalks and curb ramps is \$31.9 million a year.



CITY OF UPLAND
CALIFORNIA
INCORPORATED IN 1906

Questions?

Q & A



CITY OF UPLAND
CALIFORNIA
INCORPORATED IN 1906